

Datasheet for ABIN3029609

anti-VWF antibody

5 Images

[Go to Product page](#)

Overview

Quantity:	0.4 mL
Target:	VWF
Reactivity:	Human
Host:	Mouse
Clonality:	Monoclonal
Conjugate:	This VWF antibody is un-conjugated
Application:	Western Blotting (WB), Immunohistochemistry (IHC), Flow Cytometry (FACS), ELISA

Product Details

Immunogen:	This vWF antibody was produced from a mouse immunized with human recombinant protein.
Clone:	907CT12-1-9
Isotype:	IgG1
Purification:	Purified

Target Details

Target:	VWF
Alternative Name:	vWF (VWF Products)
Background:	Important in the maintenance of hemostasis, von Willebrand Factor promotes adhesion of platelets to the sites of vascular injury by forming a molecular bridge between sub-endothelial collagen matrix and platelet-surface receptor complex GPIb-IX-V. Also acts as a chaperone for coagulation factor VIII, delivering it to the site of injury, stabilizing its heterodimeric structure

Target Details

and protecting it from premature clearance from plasma. [UniProt]

UniProt: [P04275](#)

Application Details

Application Notes: Titration of the vWF antibody may be required due to differences in protocols and secondary/substrate sensitivity.\. IHC (Paraffin): 1:25,Flow Cytometry: 1:100,Western blot: 1:1000

Restrictions: For Research Use only

Handling

Format: Liquid

Buffer: In 1X PBS, pH 7.4, with 0.09 % sodium azide

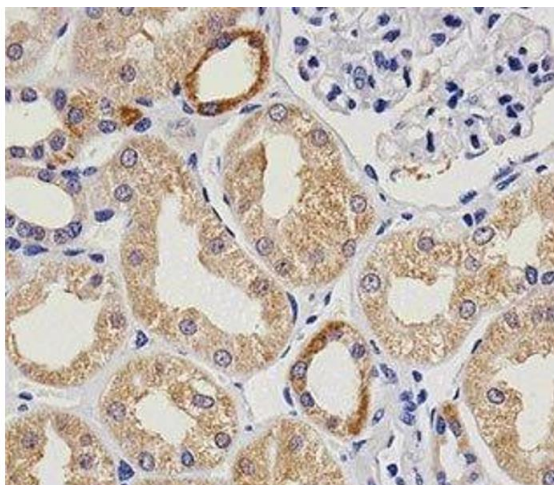
Preservative: Sodium azide

Precaution of Use: This product contains Sodium azide: a POISONOUS AND HAZARDOUS SUBSTANCE which should be handled by trained staff only.

Storage: -20 °C

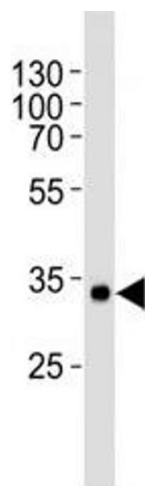
Storage Comment: Aliquot the vWF antibody and store frozen at -20°C or colder. Avoid repeated freeze-thaw cycles.

Images



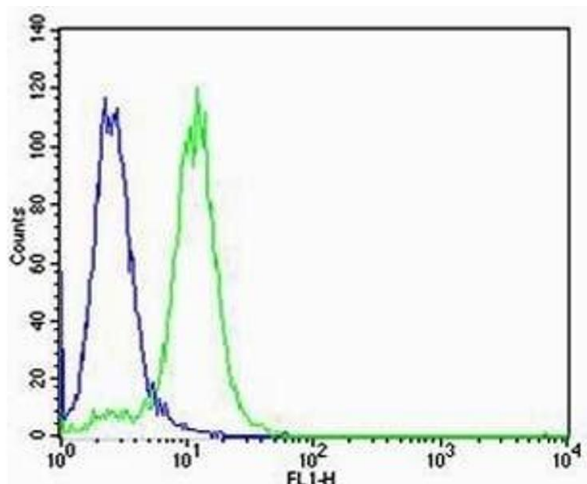
Immunohistochemistry

Image 1. Immunohistochemical analysis of paraffin-embedded human kidney using vWF at 1:25 dilution.



Western Blotting

Image 2. Western blot analysis of human recombinant protein using vWF antibody at 1:1000.



Flow Cytometry

Image 3. Flow cytometric analysis of K562 cells using vWF antibody (green) compared to an isotype control of mouse IgG1 (blue). Abs used at 1:100 dilution

Please check the [product details page](#) for more images. Overall 5 images are available for ABIN3029609.