

Datasheet for ABIN3029611
anti-WDR3 antibody (AA 208-236)

3 Images

[Go to Product page](#)

Overview

Quantity:	0.4 mL
Target:	WDR3
Binding Specificity:	AA 208-236
Reactivity:	Human
Host:	Rabbit
Clonality:	Polyclonal
Conjugate:	This WDR3 antibody is un-conjugated
Application:	Western Blotting (WB), Flow Cytometry (FACS), ELISA

Product Details

Immunogen:	A portion of amino acids 208-236 from the human protein was used as the immunogen for this WDR3 antibody.
Isotype:	Ig Fraction
Purification:	Antigen affinity purified

Target Details

Target:	WDR3
Alternative Name:	WDR3 (WDR3 Products)
Background:	This gene encodes a nuclear protein containing 10 WD repeats. WD repeats are approximately 30- to 40-amino acid domains containing several conserved residues, which usually include a trp-aspartate at the C-terminal end. Proteins belonging to the WD repeat family are involved in a

Target Details

variety of cellular processes, including cell cycle progression, signal transduction, apoptosis, and gene regulation.

UniProt: [Q9UNX4](#)

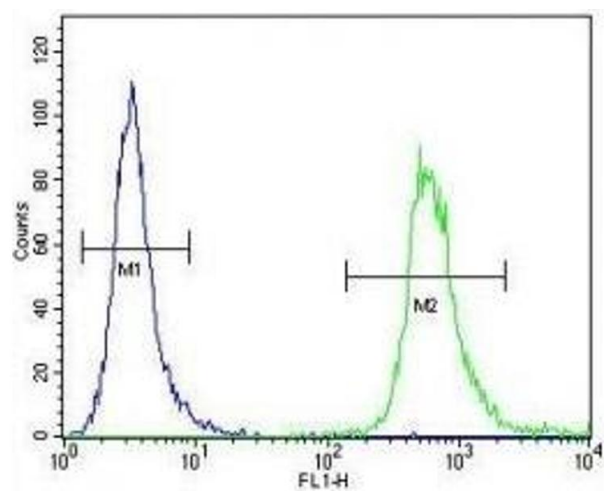
Application Details

Application Notes:	Titration of the WDR3 antibody may be required due to differences in protocols and secondary/substrate sensitivity.\. Western blot: 1:1000,Flow Cytometry: 1:10-1:50
Restrictions:	For Research Use only

Handling

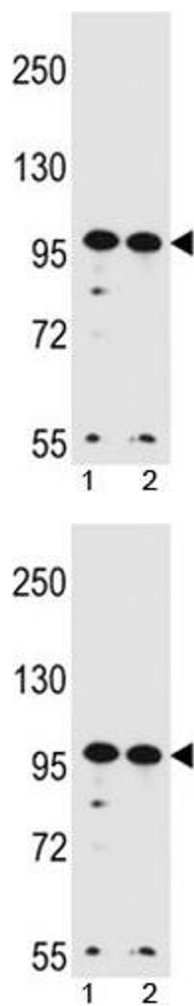
Format:	Liquid
Buffer:	In 1X PBS, pH 7.4, with 0.09 % sodium azide
Preservative:	Sodium azide
Precaution of Use:	This product contains Sodium azide: a POISONOUS AND HAZARDOUS SUBSTANCE which should be handled by trained staff only.
Storage:	-20 °C
Storage Comment:	Aliquot the WDR3 antibody and store frozen at -20°C or colder. Avoid repeated freeze-thaw cycles.

Images



Flow Cytometry

Image 1. WDR3 antibody flow cytometric analysis of HeLa cells (green) compared to a negative control (blue). FITC-conjugated goat-anti-rabbit secondary Ab was used for the analysis.



Western Blotting

Image 2. WDR3 antibody western blot analysis in HeLa, K562 lysate.

Western Blotting

Image 3. WDR3 antibody western blot analysis in HeLa, K562 lysate.