

Datasheet for ABIN3029613
anti-WDR5 antibody (C-Term)



[Go to Product page](#)

2 Images

Overview

Quantity:	0.4 mL
Target:	WDR5
Binding Specificity:	C-Term
Reactivity:	Human, Mouse
Host:	Rabbit
Clonality:	Polyclonal
Application:	Western Blotting (WB), ELISA

Product Details

Immunogen:	This WDR5 antibody was produced from a rabbit immunized with a KLH conjugated synthetic peptide between 321-354 amino acids from the C-terminal region of human WDR5.
Isotype:	Ig Fraction
Cross-Reactivity (Details):	Expected species reactivity: Rat, Bovine, Drosophila
Purification:	Antigen affinity purified

Target Details

Target:	WDR5
Alternative Name:	WDR5 (WDR5 Products)
Background:	Contributes to histone modification. May position the N- terminus of histone H3 for efficient trimethylation at 'Lys-4'. As part of the MLL1/MLL complex it is involved in methylation and dimethylation at 'Lys-4' of histone H3. H3 'Lys-4' methylation represents a specific tag for

Target Details

epigenetic transcriptional activation. As part of the NSL complex it may be involved in acetylation of nucleosomal histone H4 on several lysine residues. May regulate osteoblasts differentiation.

UniProt: [P61964](#)

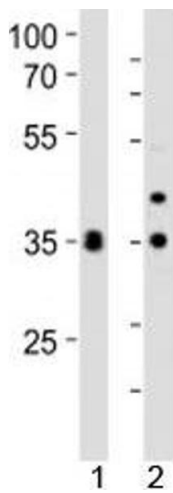
Application Details

Application Notes:	Titration of the WDR5 antibody may be required due to differences in protocols and secondary/substrate sensitivity.\. Western blot: 1:1000
Restrictions:	For Research Use only

Handling

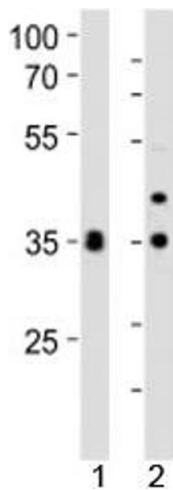
Format:	Liquid
Buffer:	In 1X PBS, pH 7.4, with 0.09 % sodium azide
Preservative:	Sodium azide
Precaution of Use:	This product contains Sodium azide: a POISONOUS AND HAZARDOUS SUBSTANCE which should be handled by trained staff only.
Storage:	-20 °C
Storage Comment:	Aliquot the WDR5 antibody and store frozen at -20°C or colder. Avoid repeated freeze-thaw cycles.

Images



Western Blotting

Image 1. Western blot analysis of lysate from 1) human HeLa and 2) mouse NIH3T3 cell line using WDR5 antibody at 1:1000. Predicted molecular weight ~36 kDa.



Western Blotting

Image 2. Western blot analysis of lysate from 1) human HeLa and 2) mouse NIH3T3 cell line using WDR5 antibody at 1:1000. Predicted molecular weight ~36 kDa.