

Datasheet for ABIN3029616  
**anti-MORG1 antibody (N-Term)**

## 3 Images

[Go to Product page](#)

## Overview

Quantity:	100 µg
Target:	MORG1 (wdr83)
Binding Specificity:	N-Term
Reactivity:	Human, Rat, Mouse
Host:	Rabbit
Clonality:	Polyclonal
Conjugate:	This MORG1 antibody is un-conjugated
Application:	Western Blotting (WB), Immunohistochemistry (Paraffin-embedded Sections) (IHC (p))

## Product Details

Immunogen:	An amino acid sequence from the N-terminus of human Morg1 (RAVRFNVDGNYCLTC) was used as the immunogen for this Morg1 antibody.
Isotype:	IgG
Purification:	Antigen affinity

## Target Details

Target:	MORG1 (wdr83)
Alternative Name:	Morg1 ( <a href="#">wdr83 Products</a> )
Background:	MORG1(mitogen-activated protein kinase organizer 1), a member of the WD-40 protein family that was isolated as a binding partner of the extracellular signal-regulated kinase(ERK) pathway scaffold protein MP1. MORG1 specifically associates with several components of the ERK

## Target Details

pathway, including MP1, Raf-1, MEK, and ERK, and stabilizes their assembly into an oligomeric complex. MORG1 facilitates ERK activation when cells are stimulated with lysophosphatidic acid, phorbol 12-myristate 13-acetate, or serum, but not in response to epidermal growth factor. Suppression of MORG1 by short interfering RNA leads to a marked reduction in ERK activity when cells are stimulated with serum. MORG1 is a component of a modular scaffold system that participates in the regulation of agonist-specific ERK signaling.

UniProt: [Q9BRX9](#)

## Application Details

**Application Notes:** The stated application concentrations are suggested starting amounts. Titration of the Morg1 antibody may be required due to differences in protocols and secondary/substrate sensitivity.\.  
Western blot: 0.5-1 µg/mL,IHC (Paraffin): 0.5-1 µg/mL

**Restrictions:** For Research Use only

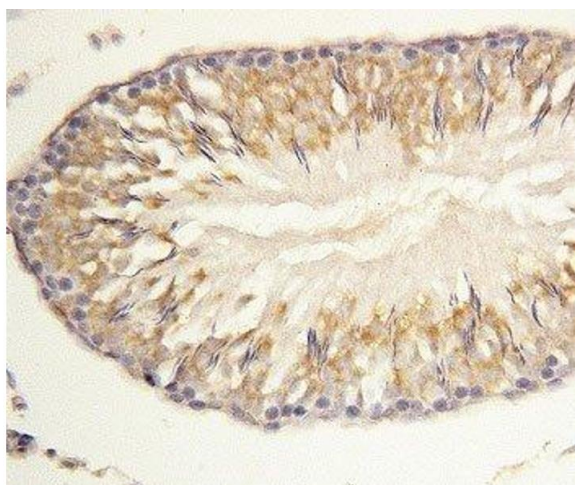
## Handling

**Buffer:** 0.5 mg/mL if reconstituted with 0.2 mL sterile DI water

**Storage:** -20 °C

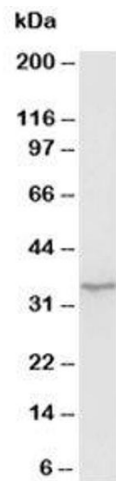
**Storage Comment:** After reconstitution, the Morg1 antibody can be stored for up to one month at 4°C. For long-term, aliquot and store at -20°C. Avoid repeated freezing and thawing.

## Images



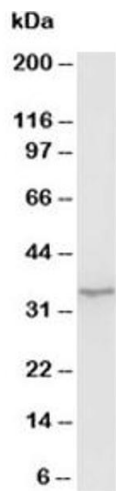
### Immunohistochemistry

**Image 1.** IHC-P: Morg1 antibody testing of rat lung tissue



Western Blotting

**Image 2.** Western blot testing of Morg1 antibody and rat brain tissue lysate



Western Blotting

**Image 3.** Western blot testing of Morg1 antibody and rat brain tissue lysate