

Datasheet for ABIN3029618
anti-WEE1 antibody (pSer123)[Go to Product page](#)

3 Images

Overview

Quantity:	0.4 mL
Target:	WEE1
Binding Specificity:	pSer123
Reactivity:	Human
Host:	Rabbit
Clonality:	Polyclonal
Conjugate:	This WEE1 antibody is un-conjugated
Application:	ELISA, Immunohistochemistry (IHC), Dot Blot (DB)

Product Details

Immunogen:	This phospho-Wee1 antibody was produced from rabbits immunized with a KLH conjugated synthetic phosphopeptide corresponding to amino acid residues surrounding pS123 of human Wee1.
Isotype:	Ig Fraction
Purification:	Antigen affinity purified

Target Details

Target:	WEE1
Alternative Name:	WEE1 (WEE1 Products)
Background:	This gene encodes a nuclear protein, which is a tyrosine kinase belonging to the Ser/Thr family of protein kinases. This protein catalyzes the inhibitory tyrosine phosphorylation of CDC2/cyclin

Target Details

B kinase, and appears to coordinate the transition between DNA replication and mitosis by protecting the nucleus from cytoplasmically activated CDC2 kinase.

UniProt: [P30291](#)

Pathways: [Cell Division Cycle](#), [Mitotic G1-G1/S Phases](#), [M Phase](#)

Application Details

Application Notes: Titration of the phospho-Wee1 antibody may be required due to differences in protocols and secondary/substrate sensitivity.\. Dot blot: 1:500,IHC (Paraffin): 1:50-1:100

Restrictions: For Research Use only

Handling

Format: Liquid

Buffer: In 1X PBS, pH 7.4, with 0.09 % sodium azide

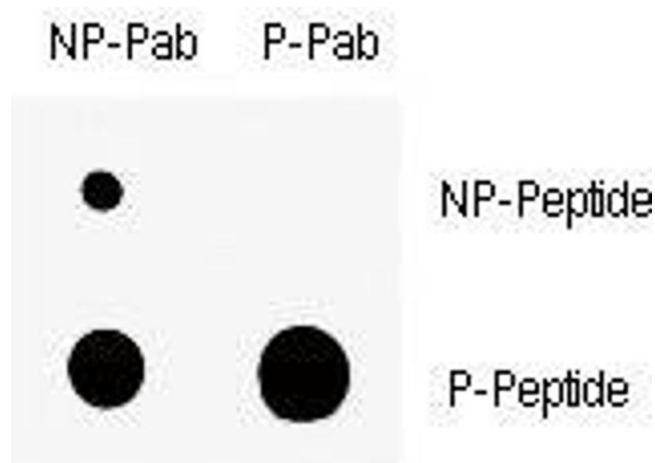
Preservative: Sodium azide

Precaution of Use: This product contains Sodium azide: a POISONOUS AND HAZARDOUS SUBSTANCE which should be handled by trained staff only.

Storage: -20 °C

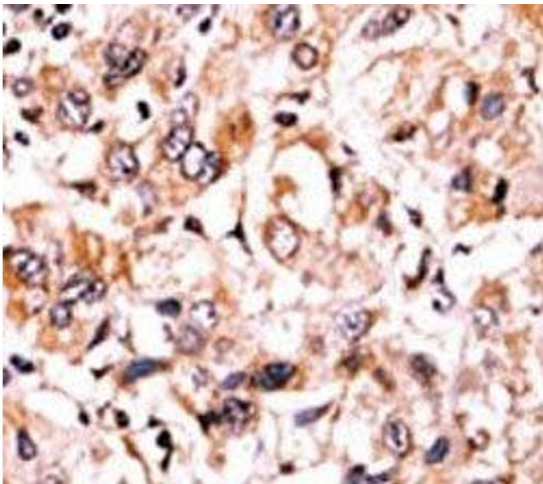
Storage Comment: Aliquot the phospho-Wee1 antibody and store frozen at -20°C or colder. Avoid repeated freeze-thaw cycles.

Images



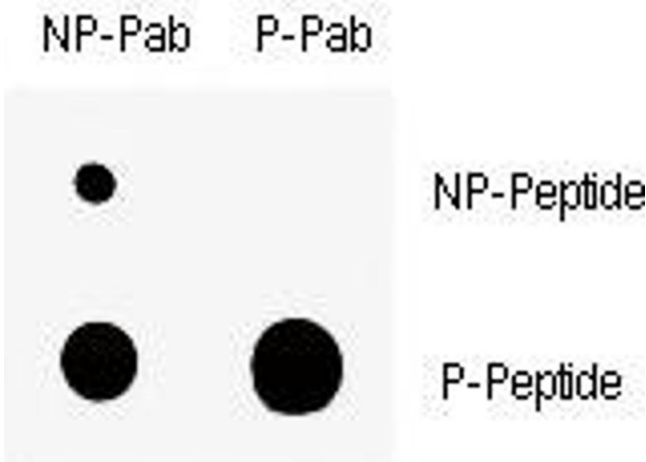
Dot Blot

Image 1. Dot blot analysis of nonphos (NP) and phospho-Wee1 antibody (P). 50ng of phos-peptide or nonphos-peptide per dot were spotted.



Immunohistochemistry

Image 2. IHC analysis of FFPE human hepatocarcinoma tissue stained with the phospho-Wee1 antibody.



Dot Blot

Image 3. Dot blot analysis of nonphos (NP) and phospho-Wee1 antibody (P). 50ng of phos-peptide or nonphos-peptide per dot were spotted.