

Datasheet for ABIN3029620
anti-WEE1 antibody (AA 604-634)[Go to Product page](#)

3 Images

Overview

Quantity:	0.4 mL
Target:	WEE1
Binding Specificity:	AA 604-634
Reactivity:	Human
Host:	Rabbit
Clonality:	Polyclonal
Conjugate:	This WEE1 antibody is un-conjugated
Application:	ELISA, Western Blotting (WB), Immunohistochemistry (IHC)

Product Details

Immunogen:	A portion of amino acids 604-634 from the human protein was used as the immunogen for this WEE1 antibody.
Isotype:	Ig Fraction
Cross-Reactivity (Details):	Expected species reactivity: Mouse, Rat
Purification:	Purified

Target Details

Target:	WEE1
Alternative Name:	WEE1 (WEE1 Products)
Background:	WEE1 is a nuclear protein, which is a tyrosine kinase belonging to the Ser/Thr family of protein

Target Details

kinases. This protein catalyzes the inhibitory tyrosine phosphorylation of CDC2/cyclin B kinase, and appears to coordinate the transition between DNA replication and mitosis by protecting the nucleus from cytoplasmically activated CDC2 kinase.

UniProt: [P30291](#)

Pathways: [Cell Division Cycle](#), [Mitotic G1-G1/S Phases](#), [M Phase](#)

Application Details

Application Notes: Titration of the WEE1 antibody may be required due to differences in protocols and secondary/substrate sensitivity.\. Western blot: 1:1000,IHC (Paraffin): 1:50-1:100

Restrictions: For Research Use only

Handling

Format: Liquid

Buffer: In 1X PBS, pH 7.4, with 0.09 % sodium azide

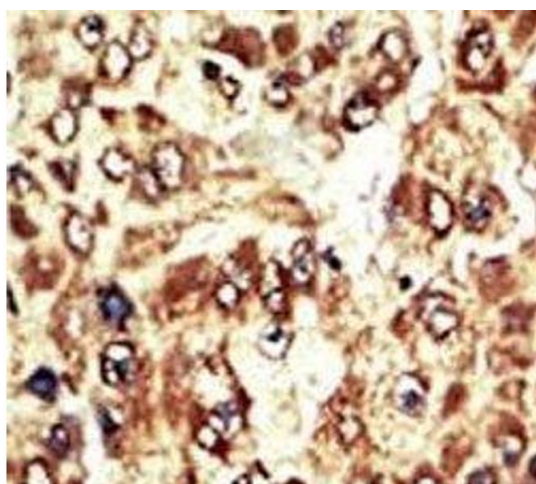
Preservative: Sodium azide

Precaution of Use: This product contains Sodium azide: a POISONOUS AND HAZARDOUS SUBSTANCE which should be handled by trained staff only.

Storage: -20 °C

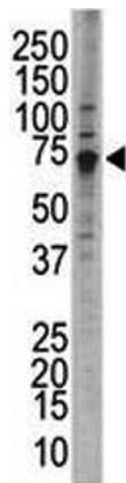
Storage Comment: Aliquot the WEE1 antibody and store frozen at -20°C or colder. Avoid repeated freeze-thaw cycles.

Images



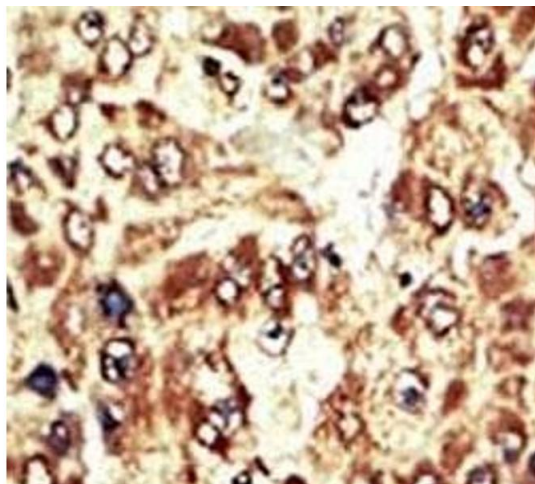
Immunohistochemistry

Image 1. IHC analysis of FFPE human hepatocarcinoma tissue stained with the WEE1 antibody



Western Blotting

Image 2. Western blot analysis of WEE1 antibody and HL-60 cell lysate; Predicted molecular weight ~72 kDa.



Immunohistochemistry

Image 3. IHC analysis of FFPE human hepatocarcinoma tissue stained with the WEE1 antibody