

Datasheet for ABIN3029621
anti-WEE2 antibody (AA 364-393)[Go to Product page](#)

3 Images

Overview

Quantity:	0.4 mL
Target:	WEE2
Binding Specificity:	AA 364-393
Reactivity:	Human, Mouse
Host:	Rabbit
Clonality:	Polyclonal
Conjugate:	This WEE2 antibody is un-conjugated
Application:	Western Blotting (WB), ELISA, Immunohistochemistry (IHC)

Product Details

Immunogen:	A portion of amino acids 364-393 from the mouse protein was used as the immunogen for this Wee2 antibody.
Isotype:	Ig Fraction
Purification:	Antigen affinity purified

Target Details

Target:	WEE2
Alternative Name:	Wee2 (WEE2 Products)
Background:	Phosphorylates and inhibits CDK1. May act as a negative regulator of entry into mitosis (G2 to M transition).

Target Details

UniProt: [Q66JT0](#)

Pathways: [M Phase](#)

Application Details

Application Notes: Titration of the Wee2 antibody may be required due to differences in protocols and secondary/substrate sensitivity.\. Western blot: 1:1000,IHC (Paraffin): 1:10-1:50

Restrictions: For Research Use only

Handling

Format: Liquid

Buffer: In 1X PBS, pH 7.4, with 0.09 % sodium azide

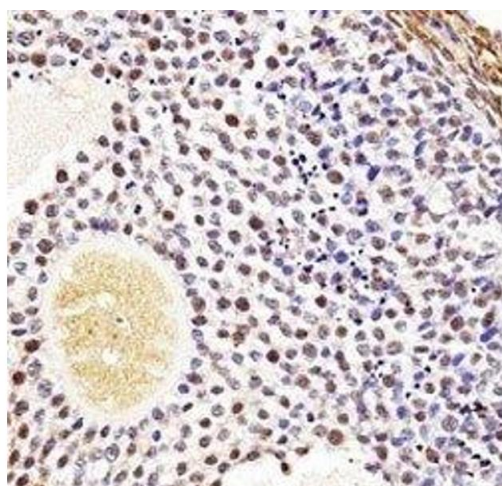
Preservative: Sodium azide

Precaution of Use: This product contains Sodium azide: a POISONOUS AND HAZARDOUS SUBSTANCE which should be handled by trained staff only.

Storage: -20 °C

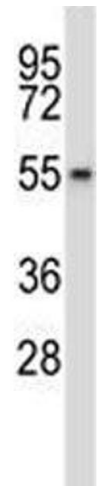
Storage Comment: Aliquot the Wee2 antibody and store frozen at -20°C or colder. Avoid repeated freeze-thaw cycles.

Images



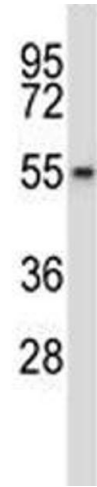
Immunohistochemistry

Image 1. Wee2 antibody immunohistochemistry analysis in formalin fixed and paraffin embedded mouse ovarian tissue.



Western Blotting

Image 2. Wee2 antibody western blot analysis in HepG2 lysate.



Western Blotting

Image 3. Wee2 antibody western blot analysis in HepG2 lysate.