



[Go to Product page](#)

Datasheet for ABIN3029622
anti-WT1 antibody (AA 346-375)

5 Images

Overview

Quantity:	0.4 mL
Target:	WT1
Binding Specificity:	AA 346-375
Reactivity:	Human
Host:	Rabbit
Clonality:	Polyclonal
Conjugate:	This WT1 antibody is un-conjugated
Application:	Immunofluorescence (IF), Flow Cytometry (FACS), Immunohistochemistry (IHC), Western Blotting (WB), ELISA

Product Details

Immunogen:	A portion of amino acids 346-375 from the human protein was used as the immunogen for this WT1 antibody.
Isotype:	Ig Fraction
Cross-Reactivity (Details):	Expected species reactivity: Mouse, Rat, Pig, Xenopus
Purification:	Antigen affinity purified

Target Details

Target:	WT1
Alternative Name:	WT1 (Wilms Tumor Protein) (WT1 Products)

Target Details

Background: Wilms Tumor protein is a transcription factor that contains four zinc-finger motifs at the C-terminus and a proline/glutamine-rich DNA-binding domain at the N-terminus. It has an essential role in the normal development of the urogenital system, and it is mutated in a small subset of patients with Wilm's tumors. This gene exhibits complex tissue-specific and polymorphic imprinting pattern, with biallelic, and monoallelic expression from the maternal and paternal alleles in different tissues. Multiple transcript variants have been described. In several variants, there is evidence for the use of a non-AUG (CUG) translation initiation site upstream of and in-frame with the first AUG. Authors of PMID:7926762 also provide evidence that WT1 mRNA undergoes RNA editing in human and rat, and that this process is tissue-restricted and developmentally regulated. [provided by RefSeq].

UniProt: [P19544](#)

Pathways: [Tube Formation](#)

Application Details

Application Notes: Titration of the WT1 antibody may be required due to differences in protocols and secondary/substrate sensitivity.\. Western blot: 1:1000,IHC (Paraffin): 1:50-1:100,Immunofluorescence: 1:10-1:50,Flow Cytometry: 1:10-1:50

Restrictions: For Research Use only

Handling

Format: Liquid

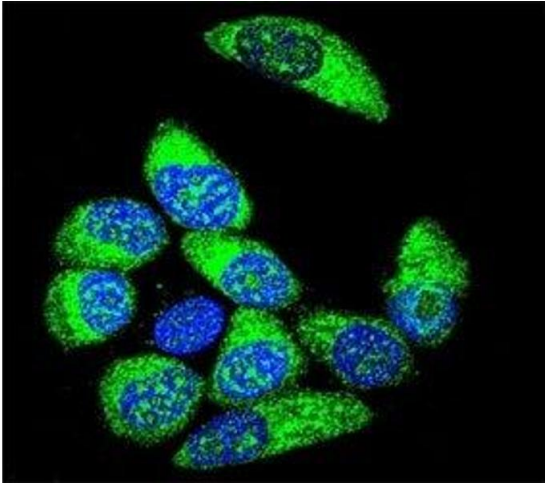
Buffer: In 1X PBS, pH 7.4, with 0.09 % sodium azide

Preservative: Sodium azide

Precaution of Use: This product contains Sodium azide: a POISONOUS AND HAZARDOUS SUBSTANCE which should be handled by trained staff only.

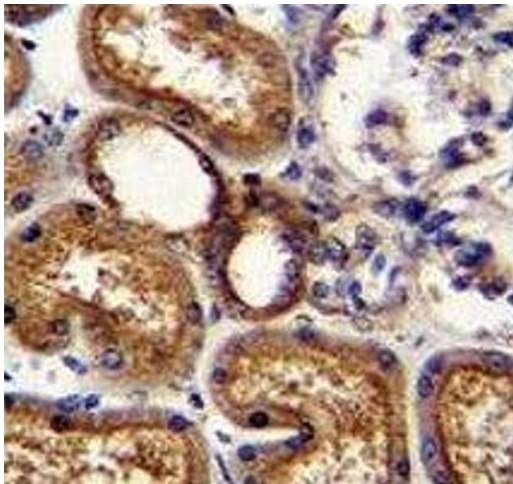
Storage: -20 °C

Storage Comment: Aliquot the WT1 antibody and store frozen at -20°C or colder. Avoid repeated freeze-thaw cycles.



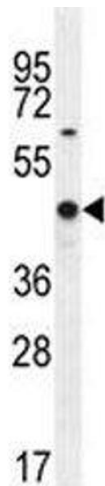
Immunofluorescence

Image 1. Confocal immunofluorescent analysis of WT1 antibody with MCF-7 cells followed by Alexa Fluor 488-conjugated goat anti-rabbit IgG (green). DAPI was used to stain the nuclei (blue).



Immunohistochemistry

Image 2. WT1 antibody immunohistochemistry analysis in formalin fixed and paraffin embedded human kidney tissue.



Western Blotting

Image 3. WT1 antibody western blot analysis in MCF-7 lysate. Predicted molecular weight: ~49 kDa

Please check the [product details page](#) for more images. Overall 5 images are available for ABIN3029622.