



[Go to Product page](#)

Datasheet for ABIN3029633

## anti-WNT4 antibody (AA 211-239)

### 5 Images

#### Overview

Quantity:	0.2 mL
Target:	WNT4
Binding Specificity:	AA 211-239
Reactivity:	Human, Mouse
Host:	Rabbit
Clonality:	Polyclonal
Conjugate:	This WNT4 antibody is un-conjugated
Application:	Western Blotting (WB), Immunohistochemistry (IHC), ELISA, Flow Cytometry (FACS)

#### Product Details

Immunogen:	A portion of amino acids 211-239 from the human protein was used as the immunogen for this WNT4 antibody.
Isotype:	Ig Fraction
Cross-Reactivity (Details):	Expected species reactivity: Rat
Purification:	Purified

#### Target Details

Target:	WNT4
Alternative Name:	WNT4 ( <a href="#">WNT4 Products</a> )
Background:	The WNT family consists of secreted signaling proteins. These proteins have been implicated in

## Target Details

---

oncogenesis and in several developmental processes, including regulation of cell fate and patterning during embryogenesis. WNT4 is a protein which shows 98 % amino acid identity to the Wnt4 protein of mouse and rat. It play a concerted role in both the control of female development and the prevention of testes formation.

UniProt: [P56705](#)

Pathways: [WNT Signaling](#), [Regulation of Hormone Metabolic Process](#), [Regulation of Hormone Biosynthetic Process](#), [Cell-Cell Junction Organization](#), [Tube Formation](#)

## Application Details

---

Application Notes: Titration of the WNT4 antibody may be required due to differences in protocols and secondary/substrate sensitivity.\. Western blot: 1:1000,IHC (Paraffin): 1:10-1:50,Flow Cytometry: 1:10-1:50

Restrictions: For Research Use only

## Handling

---

Format: Liquid

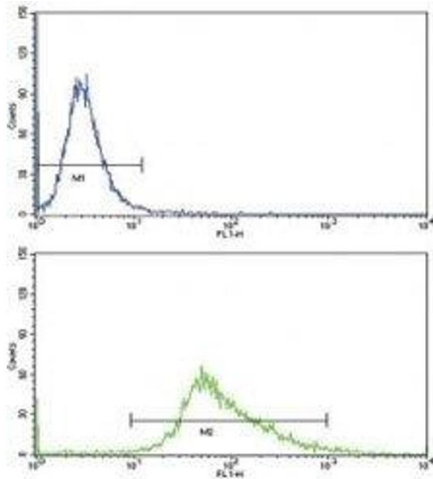
Buffer: In 1X PBS, pH 7.4, with 0.09 % sodium azide

Preservative: Sodium azide

Precaution of Use: This product contains Sodium azide: a POISONOUS AND HAZARDOUS SUBSTANCE which should be handled by trained staff only.

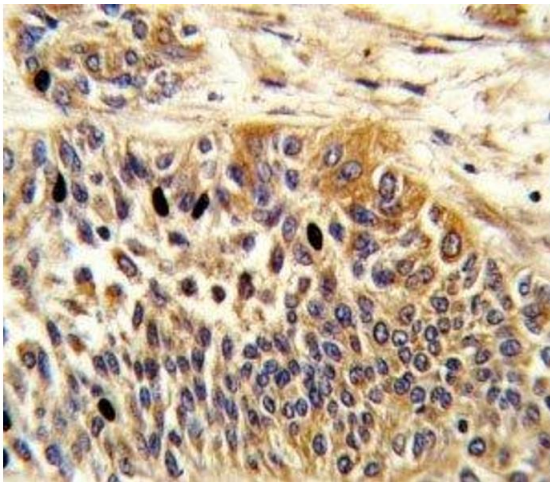
Storage: -20 °C

Storage Comment: Aliquot the WNT4 antibody and store frozen at -20°C or colder. Avoid repeated freeze-thaw cycles.



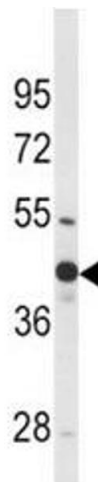
### Flow Cytometry

**Image 1.** Flow cytometric analysis of MDA-MB468 cells using WNT4 antibody (green) compared to a negative control (blue). FITC-conjugated goat-anti-rabbit secondary Ab was used for the analysis.



### Immunohistochemistry

**Image 2.** IHC analysis of FFPE human bladder carcinoma stained with WNT4 antibody



### Western Blotting

**Image 3.** Western blot analysis of WNT4 antibody and mouse bladder tissue lysate.

Please check the [product details page](#) for more images. Overall 5 images are available for ABIN3029633.