

Datasheet for ABIN3029645
anti-XRCC1 antibody (AA 407-435)

6 Images

[Go to Product page](#)

Overview

Quantity:	0.4 mL
Target:	XRCC1
Binding Specificity:	AA 407-435
Reactivity:	Human
Host:	Rabbit
Clonality:	Polyclonal
Conjugate:	This XRCC1 antibody is un-conjugated
Application:	Western Blotting (WB), Immunohistochemistry (IHC), Immunofluorescence (IF), ELISA, Flow Cytometry (FACS)

Product Details

Immunogen:	A portion of amino acids 407-435 from the human protein was used as the immunogen for this XRCC1 antibody.
Isotype:	Ig Fraction
Purification:	Antigen affinity purified

Target Details

Target:	XRCC1
Alternative Name:	XRCC1 (XRCC1 Products)
Background:	The protein encoded by this gene is involved in the efficient repair of DNA single-strand breaks formed by exposure to ionizing radiation and alkylating agents. This protein interacts with DNA

Target Details

ligase III, polymerase beta and poly (ADP-ribose) polymerase to participate in the base excision repair pathway. It may play a role in DNA processing during meiosis and recombination in germ cells. A rare microsatellite polymorphism in this gene is associated with cancer in patients of varying radiosensitivity.

UniProt: [P18887](#)

Pathways: [DNA Damage Repair](#)

Application Details

Application Notes: Titration of the XRCC1 antibody may be required due to differences in protocols and secondary/substrate sensitivity.\. Immunofluorescence: 1:25,Western blot: 1:1000,IHC (Paraffin): 1:50-1:100,Flow Cytometry: 1:10-1:50

Restrictions: For Research Use only

Handling

Format: Liquid

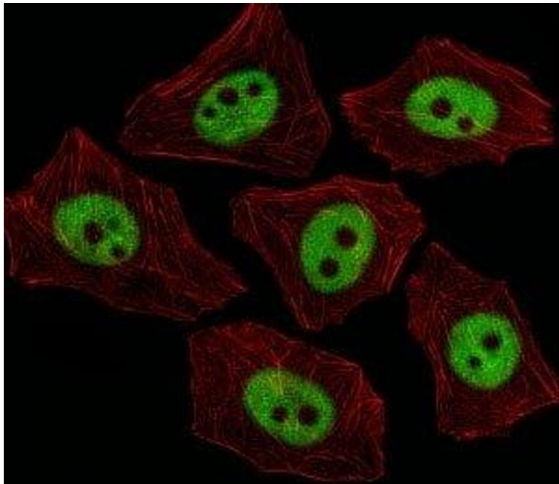
Buffer: In 1X PBS, pH 7.4, with 0.09 % sodium azide

Preservative: Sodium azide

Precaution of Use: This product contains Sodium azide: a POISONOUS AND HAZARDOUS SUBSTANCE which should be handled by trained staff only.

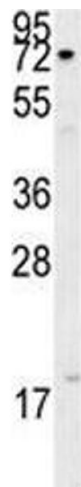
Storage: -20 °C

Storage Comment: Aliquot the XRCC1 antibody and store frozen at -20°C or colder. Avoid repeated freeze-thaw cycles.



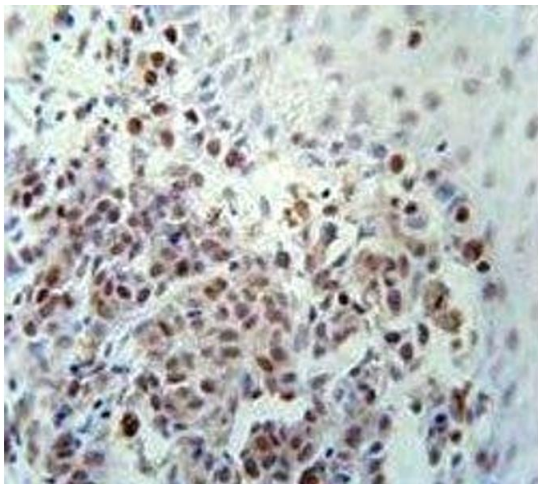
Immunofluorescence

Image 1. Immunofluorescent analysis of A549 cells using XRCC1 antibody at 1:25. Alexa Fluor 488-conjugated secondary was used (green). Cytoplasmic actin was counterstained with Dylight Fluor 554 conjugated Phalloidin (red).



Western Blotting

Image 2. XRCC1 antibody western blot analysis in A375 lysate. Predicted molecular weight ~69 kDa.



Immunohistochemistry

Image 3. XRCC1 antibody immunohistochemistry analysis in formalin fixed and paraffin embedded human skin carcinoma.

Please check the [product details page](#) for more images. Overall 6 images are available for ABIN3029645.