



[Go to Product page](#)

Datasheet for ABIN3029653
anti-XRCC5 antibody (AA 424-450)

5 Images

Overview

Quantity:	0.4 mL
Target:	XRCC5
Binding Specificity:	AA 424-450
Reactivity:	Human
Host:	Rabbit
Clonality:	Polyclonal
Conjugate:	This XRCC5 antibody is un-conjugated
Application:	Western Blotting (WB), ELISA, Immunofluorescence (IF), Flow Cytometry (FACS)

Product Details

Immunogen:	A portion of amino acids 424-450 from the human protein was used as the immunogen for this XRCC5 antibody.
Isotype:	Ig Fraction
Purification:	Antigen affinity purified

Target Details

Target:	XRCC5
Alternative Name:	XRCC5 (XRCC5 Products)
Background:	The protein encoded by this gene is the 80-kilodalton subunit of the Ku heterodimer protein which is also known as ATP-dependant DNA helicase II or DNA repair protein XRCC5. Ku is the DNA-binding component of the DNA-dependent protein kinase, and it functions together with

Target Details

the DNA ligase IV-XRCC4 complex in the repair of DNA double-strand break by non-homologous end joining and the completion of V(D)J recombination events. This gene functionally complements Chinese hamster xrs-6, a mutant defective in DNA double-strand break repair and in ability to undergo V(D)J recombination. A rare microsatellite polymorphism in this gene is associated with cancer in patients of varying radiosensitivity.

UniProt: [P13010](#)

Pathways: [DNA Damage Repair](#)

Application Details

Application Notes: Titration of the XRCC5 antibody may be required due to differences in protocols and secondary/substrate sensitivity.\. Western blot: 1:1000,Immunofluorescence: 1:10-1:50,Flow Cytometry: 1:10-1:50

Restrictions: For Research Use only

Handling

Format: Liquid

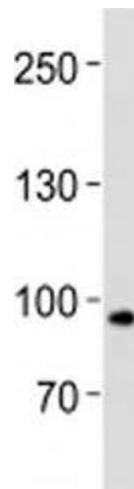
Buffer: In 1X PBS, pH 7.4, with 0.09 % sodium azide

Preservative: Sodium azide

Precaution of Use: This product contains Sodium azide: a POISONOUS AND HAZARDOUS SUBSTANCE which should be handled by trained staff only.

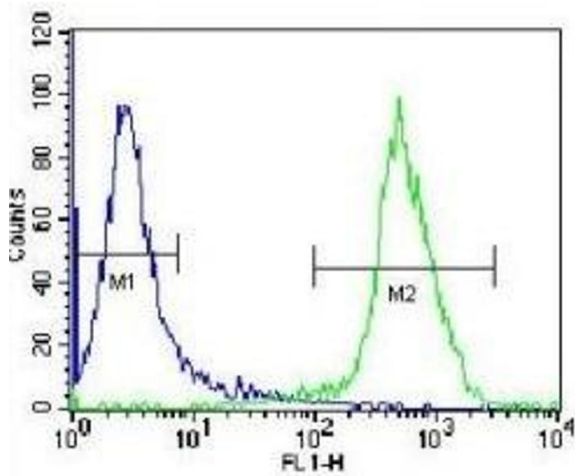
Storage: -20 °C

Storage Comment: Aliquot the XRCC5 antibody and store frozen at -20°C or colder. Avoid repeated freeze-thaw cycles.



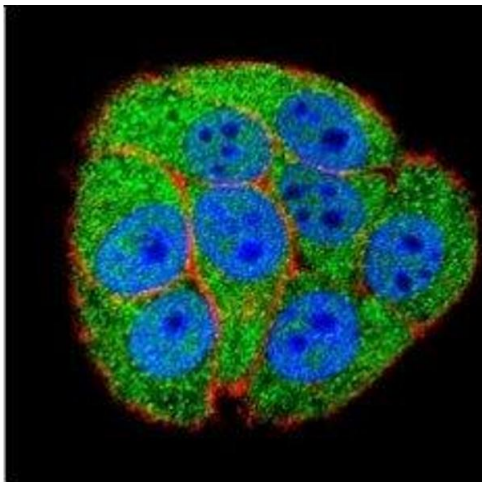
Western Blotting

Image 1. XRCC5 antibody western blot analysis in human placenta tissue lysate



Flow Cytometry

Image 2. XRCC5 antibody flow cytometric analysis of Jurkat cells (green) compared to a negative control (blue). FITC-conjugated donkey-anti-rabbit secondary Ab was used for the analysis.



Immunofluorescence

Image 3. Confocal immunofluorescent analysis of XRCC5 antibody with HeLa cells followed by Alexa Fluor 488-conjugated secondary (green). Actin filaments have been labeled with Alexa Fluor 555 Phalloidin (red). DAPI was used to stain the nuclei (blue).

Please check the [product details page](#) for more images. Overall 5 images are available for ABIN3029653.