

Datasheet for ABIN3029655
anti-XRCC6 antibody (AA 521-548)

11 Images

[Go to Product page](#)

Overview

Quantity:	0.4 mL
Target:	XRCC6
Binding Specificity:	AA 521-548
Reactivity:	Human
Host:	Rabbit
Clonality:	Polyclonal
Conjugate:	This XRCC6 antibody is un-conjugated
Application:	Western Blotting (WB), ELISA, Immunohistochemistry (IHC), Immunofluorescence (IF), Flow Cytometry (FACS)

Product Details

Immunogen:	A portion of amino acids 521-548 from the human protein was used as the immunogen for this XRCC6 antibody.
Isotype:	Ig Fraction
Purification:	Antigen affinity purified

Target Details

Target:	XRCC6
Alternative Name:	XRCC6 (XRCC6 Products)
Background:	XRCC6 is a nuclear complex consisting of two subunits with molecular masses of approximately 70 and 80 kDa. The complex functions as a single-stranded DNA-dependent

Target Details

ATP-dependent helicase. The complex may be involved in the repair of nonhomologous DNA ends such as that required for double-strand break repair, transposition, and V(D)J recombination. High levels of autoantibodies to p70 and p80 have been found in some patients with systemic lupus erythematosus.

UniProt: [P12956](#)

Pathways: [DNA Damage Repair](#)

Application Details

Application Notes: Titration of the XRCC6 antibody may be required due to differences in protocols and secondary/substrate sensitivity.\. Western blot: 1:1000,IHC (Paraffin): 1:50-1:100,Flow Cytometry: 1:10-1:50,Immunofluorescence: 1:10-1:50

Restrictions: For Research Use only

Handling

Format: Liquid

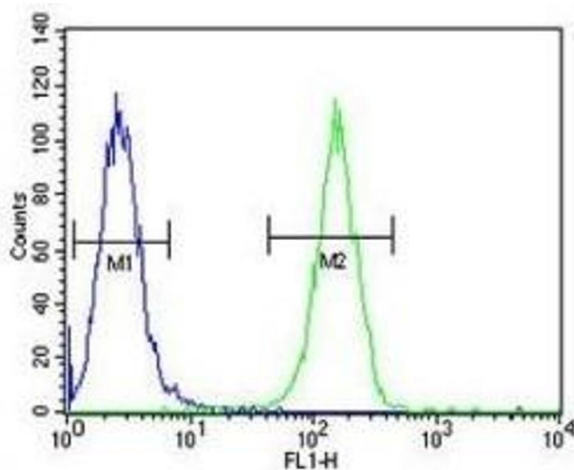
Buffer: In 1X PBS, pH 7.4, with 0.09 % sodium azide

Preservative: Sodium azide

Precaution of Use: This product contains Sodium azide: a POISONOUS AND HAZARDOUS SUBSTANCE which should be handled by trained staff only.

Storage: -20 °C

Storage Comment: Aliquot the XRCC6 antibody and store frozen at -20°C or colder. Avoid repeated freeze-thaw cycles.



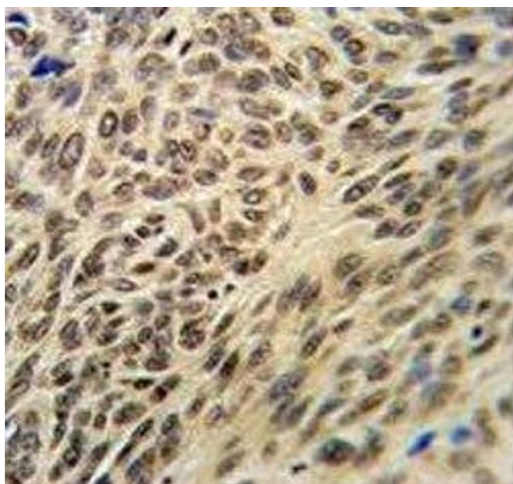
Flow Cytometry

Image 1. XRCC6 antibody flow cytometric analysis of A2058 cells (green) compared



Western Blotting

Image 2. Western blot analysis of XRCC6 antibody and A2058 lysate.



Immunohistochemistry

Image 3. XRCC6 antibody IHC analysis in formalin fixed and paraffin embedded human lung carcinoma.

Please check the [product details page](#) for more images. Overall 11 images are available for ABIN3029655.