

Datasheet for ABIN3029656  
**anti-XRCC6 antibody (AA 228-254)**

## 6 Images

[Go to Product page](#)

## Overview

Quantity:	0.4 mL
Target:	XRCC6
Binding Specificity:	AA 228-254
Reactivity:	Human
Host:	Rabbit
Clonality:	Polyclonal
Conjugate:	This XRCC6 antibody is un-conjugated
Application:	Western Blotting (WB), ELISA, Immunohistochemistry (IHC), Immunofluorescence (IF), Flow Cytometry (FACS)

## Product Details

Immunogen:	A portion of amino acids 228-254 from the human protein was used as the immunogen for this XRCC6 antibody.
Isotype:	Ig Fraction
Purification:	Antigen affinity purified

## Target Details

Target:	XRCC6
Alternative Name:	XRCC6 ( <a href="#">XRCC6 Products</a> )
Background:	The p70/p80 autoantigen is a nuclear complex consisting of two subunits with molecular masses of approximately 70 and 80 kDa. The complex functions as a single-stranded DNA-

## Target Details

dependent ATP-dependent helicase. The complex may be involved in the repair of nonhomologous DNA ends such as that required for double-strand break repair, transposition, and V(D)J recombination. High levels of autoantibodies to p70 and p80 have been found in some patients with systemic lupus erythematosus.

UniProt: [P12956](#)

Pathways: [DNA Damage Repair](#)

## Application Details

Application Notes: Titration of the XRCC6 antibody may be required due to differences in protocols and secondary/substrate sensitivity.\. Western blot: 1:1000,IHC (Paraffin): 1:50-1:100,Flow Cytometry: 1:10-1:50,Immunofluorescence: 1:10-1:50

Restrictions: For Research Use only

## Handling

Format: Liquid

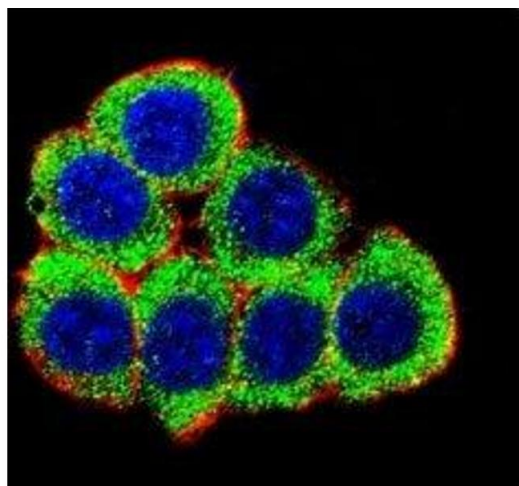
Buffer: In 1X PBS, pH 7.4, with 0.09 % sodium azide

Preservative: Sodium azide

Precaution of Use: This product contains Sodium azide: a POISONOUS AND HAZARDOUS SUBSTANCE which should be handled by trained staff only.

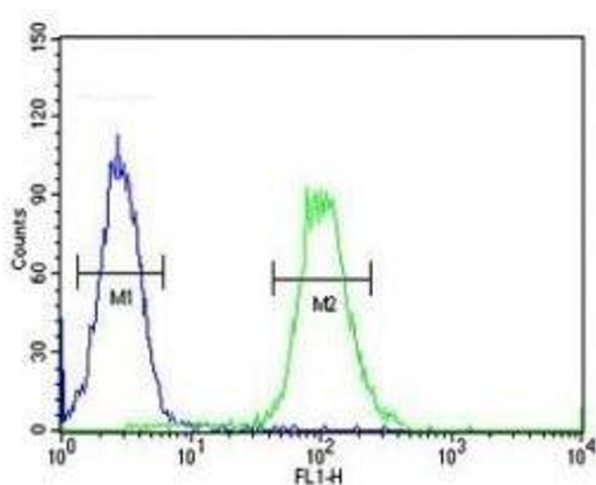
Storage: -20 °C

Storage Comment: Aliquot the XRCC6 antibody and store frozen at -20°C or colder. Avoid repeated freeze-thaw cycles.



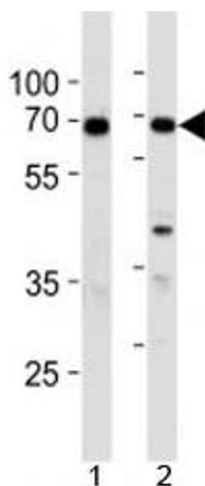
#### Immunofluorescence

**Image 1.** Confocal immunofluorescent analysis of XRCC6 antibody with 293 cells followed by Alexa Fluor 488-conjugated goat anti-rabbit IgG (green). Actin filaments have been labeled with Alexa Fluor 555 Phalloidin (red). DAPI was used to stain the nuclei (blue).



#### Flow Cytometry

**Image 2.** XRCC6 antibody flow cytometric analysis of HeLa cells (green) compared to a negative control (blue). FITC-conjugated goat-anti-rabbit secondary Ab was used for the analysis.



#### Western Blotting

**Image 3.** XRCC6 antibody western blot analysis in 1) 293 and 2) A549 lysate

Please check the [product details page](#) for more images. Overall 6 images are available for ABIN3029656.