

Datasheet for ABIN3029667
anti-ZBTB16 antibody (AA 637-666)[Go to Product page](#)

2 Images

Overview

Quantity:	0.4 mL
Target:	ZBTB16
Binding Specificity:	AA 637-666
Reactivity:	Human
Host:	Rabbit
Clonality:	Polyclonal
Conjugate:	This ZBTB16 antibody is un-conjugated
Application:	Western Blotting (WB), ELISA

Product Details

Immunogen:	A portion of amino acids 637-666 from the human protein was used as the immunogen for this PLZF antibody.
Isotype:	Ig Fraction
Purification:	Purified

Target Details

Target:	ZBTB16
Alternative Name:	PLZF (ZBTB16 Products)
Background:	PLZF is a member of the Krueppel C2H2-type zinc-finger protein family and a zinc finger transcription factor that contains nine Kruppel-type zinc finger domains at the carboxyl terminus. This protein is located in the nucleus, is involved in cell cycle progression, and

Target Details

interacts with a histone deacetylase. Specific instances of aberrant gene rearrangement at this locus have been associated with acute promyelocytic leukemia (APL).

UniProt: [Q05516](#)

Pathways: [Positive Regulation of fat Cell Differentiation](#)

Application Details

Application Notes: Titration of the PLZF antibody may be required due to differences in protocols and secondary/substrate sensitivity.\. Western blot: 1:1000

Restrictions: For Research Use only

Handling

Format: Liquid

Buffer: In 1X PBS, pH 7.4, with 0.09 % sodium azide

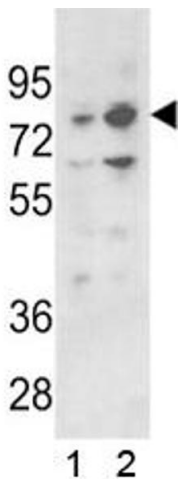
Preservative: Sodium azide

Precaution of Use: This product contains Sodium azide: a POISONOUS AND HAZARDOUS SUBSTANCE which should be handled by trained staff only.

Storage: -20 °C

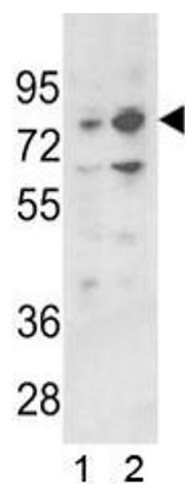
Storage Comment: Aliquot the PLZF antibody and store frozen at -20°C or colder. Avoid repeated freeze-thaw cycles.

Images



Western Blotting

Image 1. Western blot analysis of PLZF antibody and 1) 293 and 2) K562 lysate



Western Blotting

Image 2. Western blot analysis of PLZF antibody and 1) 293 and 2) K562 lysate