



[Go to Product page](#)

Datasheet for ABIN3029671
anti-ZEB2 antibody (AA 1078-1105)

3 Images

Overview

| | |
|----------------------|---|
| Quantity: | 0.4 mL |
| Target: | ZEB2 |
| Binding Specificity: | AA 1078-1105 |
| Reactivity: | Human |
| Host: | Rabbit |
| Clonality: | Polyclonal |
| Conjugate: | This ZEB2 antibody is un-conjugated |
| Application: | Western Blotting (WB), ELISA, Flow Cytometry (FACS) |

Product Details

| | |
|-----------------------------|---|
| Immunogen: | A portion of amino acids 1078-1105 from the human protein was used as the immunogen for this ZEB2 antibody. |
| Isotype: | Ig Fraction |
| Cross-Reactivity (Details): | Expected species reactivity: Mouse |
| Purification: | Antigen affinity purified |

Target Details

| | |
|-------------------|--|
| Target: | ZEB2 |
| Alternative Name: | ZEB2 (ZEB2 Products) |
| Background: | The protein encoded by this gene is a member of the Zfh1 family of 2-handed zinc |

Target Details

finger/homeodomain proteins. It is located in the nucleus and functions as a DNA-binding transcriptional repressor that interacts with activated SMADs. Mutations in this gene are associated with Hirschsprung disease/Mowat-Wilson syndrome. Alternatively spliced transcript variants have been found for this gene.

UniProt: [O60315](#)

Pathways: [Tube Formation](#)

Application Details

Application Notes: Titration of the ZEB2 antibody may be required due to differences in protocols and secondary/substrate sensitivity.\. Western blot: 1:1000,Flow Cytometry: 1:10-1:50

Restrictions: For Research Use only

Handling

Format: Liquid

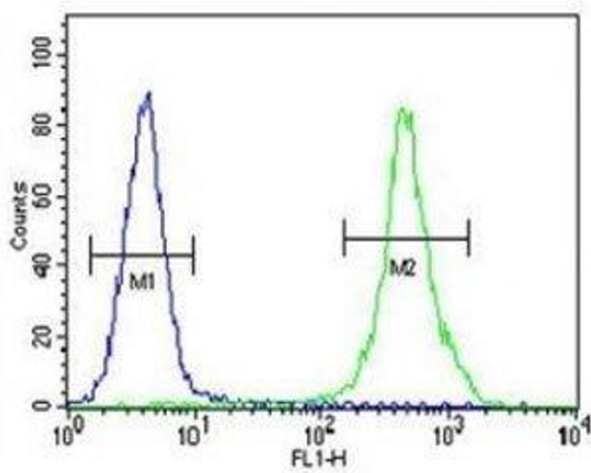
Buffer: In 1X PBS, pH 7.4, with 0.09 % sodium azide

Preservative: Sodium azide

Precaution of Use: This product contains Sodium azide: a POISONOUS AND HAZARDOUS SUBSTANCE which should be handled by trained staff only.

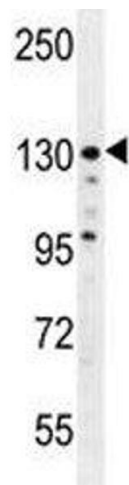
Storage: -20 °C

Storage Comment: Aliquot the ZEB2 antibody and store frozen at -20°C or colder. Avoid repeated freeze-thaw cycles.



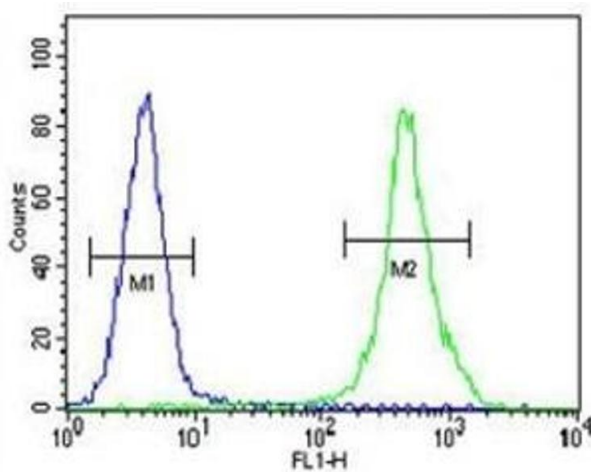
Flow Cytometry

Image 1. ZEB2 antibody flow cytometric analysis of MDA-MB435 cells (right histogram) compared to a negative control (left histogram). FITC-conjugated goat-anti-rabbit secondary Ab was used for the analysis.



Western Blotting

Image 2. ZEB2 antibody western blot analysis in MDA-MB435 lysate. Predicted molecular weight 120~136 kDa.



Flow Cytometry

Image 3. ZEB2 antibody flow cytometric analysis of MDA-MB435 cells (right histogram) compared to a negative control (left histogram). FITC-conjugated goat-anti-rabbit secondary Ab was used for the analysis.