

Datasheet for ABIN3029675  
**anti-ZFP42 antibody (AA 1-30)**[Go to Product page](#)

## 2 Images

## Overview

Quantity:	0.4 mL
Target:	ZFP42
Binding Specificity:	AA 1-30
Reactivity:	Human, Mouse
Host:	Rabbit
Clonality:	Polyclonal
Conjugate:	This ZFP42 antibody is un-conjugated
Application:	Western Blotting (WB), ELISA

## Product Details

Immunogen:	A portion of amino acids 1-30 from the human protein was used as the immunogen for this Rex1 antibody.
Isotype:	Ig Fraction
Purification:	Purified

## Target Details

Target:	ZFP42
Alternative Name:	Rex1 ( <a href="#">ZFP42 Products</a> )
Background:	Zinc finger proteins have regions (zinc finger domains) consisting of cysteines and histidines or cysteines alone which can form a tetrahedral complex around a Zinc ion. Zinc finger represent a class of DNA-binding proteins, act as transcriptional regulators of other genes. These

## Target Details

multifunctional transcription factors exhibits control on a large number of cellular genes by binding to sites overlapping the transcription start site and plays an important role in development and differentiation. Hromas et al. in an effort to identify activators of the genetic cascade in hemopoietic differentiation probed a human myeloid cDNA library. ZNF42 may be a regulator of transcriptional events during hemopoietic development.

UniProt: [Q96MM3](#)

## Application Details

Application Notes: Titration of the Rex1 antibody may be required due to differences in protocols and secondary/substrate sensitivity.\. Western blot: 1:1000

Restrictions: For Research Use only

## Handling

Format: Liquid

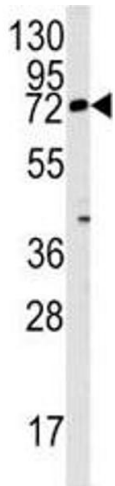
Buffer: In 1X PBS pH 7.4 with 0.09 % sodium azide

Preservative: Sodium azide

Precaution of Use: This product contains Sodium azide: a POISONOUS AND HAZARDOUS SUBSTANCE which should be handled by trained staff only.

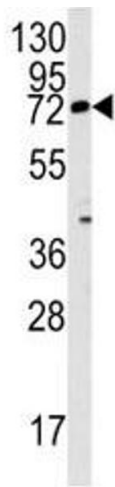
Storage: -20 °C

Storage Comment: Aliquot the Rex1 antibody and store frozen at -20°C or colder. Avoid repeated freeze-thaw cycles.



Western Blotting

**Image 1.** Western blot analysis of Rex1 antibody and mouse lung tissue lysate



Western Blotting

**Image 2.** Western blot analysis of Rex1 antibody and mouse lung tissue lysate