

Datasheet for ABIN3029684

anti-Ammonium Transporter antibody (pSer465)



[Go to Product page](#)

1 Image

Overview

Quantity:	0.4 mL
Target:	Ammonium Transporter (AMTC)
Binding Specificity:	pSer465
Reactivity:	Green bean
Host:	Rabbit
Clonality:	Polyclonal
Conjugate:	This Ammonium Transporter antibody is un-conjugated
Application:	Dot Blot (DB), ELISA

Product Details

Immunogen:	This phospho-Ammonium transporter antibody was produced from rabbits immunized with a KLH conjugated synthetic phosphopeptide surrounding pT465 of French bean Ammonium transporter.
Isotype:	Ig Fraction
Purification:	Antigen affinity purified

Target Details

Target:	Ammonium Transporter (AMTC)
Alternative Name:	Ammonium Transporter (AMTC Products)
Background:	A member of the AMT family.

Target Details

UniProt: [E2CWJ2](#)

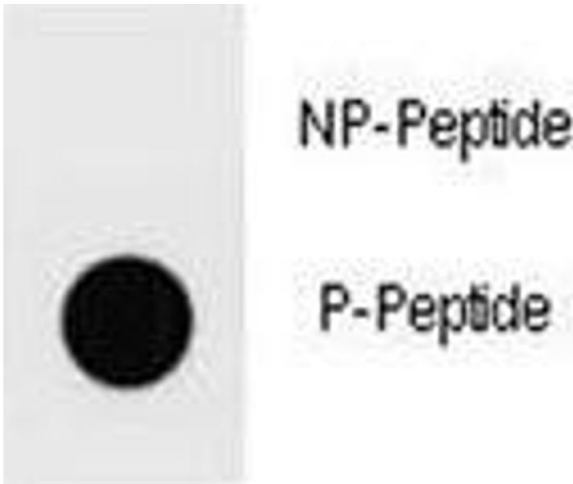
Application Details

Application Notes:	Titration of the phospho-Ammonium transporter antibody may be required due to differences in protocols and secondary/substrate sensitivity.\. Dot blot: 1:500
Restrictions:	For Research Use only

Handling

Format:	Liquid
Buffer:	In 1X PBS, pH 7.4, with 0.09 % sodium azide
Preservative:	Sodium azide
Precaution of Use:	This product contains Sodium azide: a POISONOUS AND HAZARDOUS SUBSTANCE which should be handled by trained staff only.
Storage:	-20 °C
Storage Comment:	Aliquot the phospho-Ammonium transporter antibody and store frozen at -20oC or colder. Avoid repeated freeze-thaw cycles.

Images



Dot Blot

Image 1. Dot blot analysis of phospho-Ammonium transporter antibody. 50ng of phos-peptide or nonphos-peptide per dot were spotted.