

Datasheet for ABIN3029690  
**anti-C5 antibody (AA 253-281)**[Go to Product page](#)

## 5 Images

## Overview

Quantity:	0.4 mL
Target:	C5
Binding Specificity:	AA 253-281
Reactivity:	Human
Host:	Rabbit
Clonality:	Polyclonal
Conjugate:	This C5 antibody is un-conjugated
Application:	Western Blotting (WB), ELISA, Immunohistochemistry (IHC), Flow Cytometry (FACS)

## Product Details

Immunogen:	A portion of amino acids 253-281 from the human protein was used as the immunogen for this C5 antibody.
Isotype:	Ig Fraction
Purification:	Antigen affinity purified

## Target Details

Target:	C5
Alternative Name:	C5 ( <a href="#">C5 Products</a> )
Background:	C5 is the fifth component of complement, which plays an important role in inflammatory and cell killing processes. This protein is comprised of alpha and beta polypeptide chains that are linked by a disulfide bridge. An activation peptide, C5a, which is an anaphylatoxin that

## Target Details

possesses potent spasmogenic and chemotactic activity, is derived from the alpha polypeptide via cleavage with a convertase. The C5b macromolecular cleavage product can form a complex with the C6 complement component, and this complex is the basis for formation of the membrane attack complex, which includes additional complement components.

UniProt: [P01031](#)

Pathways: [Complement System](#), [Carbohydrate Homeostasis](#)

## Application Details

Application Notes: Titration of the C5 antibody may be required due to differences in protocols and secondary/substrate sensitivity.\. Western blot: 1:1000,IHC (Paraffin): 1:50-1:100,Flow Cytometry: 1:10-1:50

Restrictions: For Research Use only

## Handling

Format: Liquid

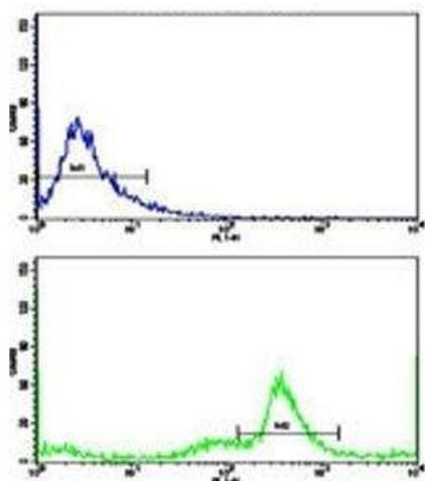
Buffer: In 1X PBS, pH 7.4, with 0.09 % sodium azide

Preservative: Sodium azide

Precaution of Use: This product contains Sodium azide: a POISONOUS AND HAZARDOUS SUBSTANCE which should be handled by trained staff only.

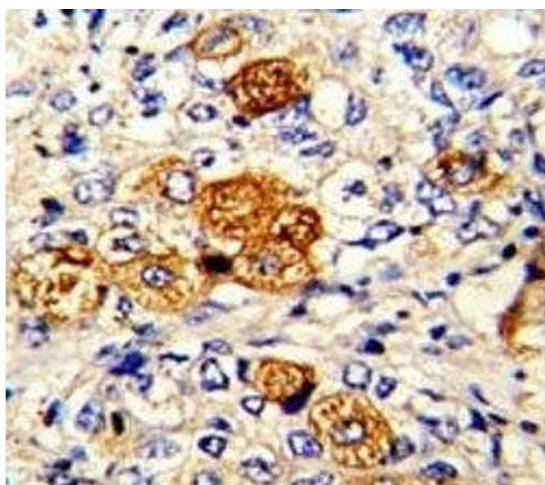
Storage: -20 °C

Storage Comment: Aliquot the C5 antibody and store frozen at -20°C or colder. Avoid repeated freeze-thaw cycles.



### Flow Cytometry

**Image 1.** Flow cytometric analysis of MDA-231 cells using C5 antibody (green) compared to a negative control (blue). FITC-conjugated goat-anti-rabbit secondary Ab was used for the analysis.



### Immunohistochemistry

**Image 2.** IHC analysis of FFPE human breast carcinoma with C5 antibody



### Western Blotting

**Image 3.** Western blot analysis of C5 antibody and HL-60 lysate

Please check the [product details page](#) for more images. Overall 5 images are available for ABIN3029690.