

Datasheet for ABIN3029692
anti-C5A antibody (N-Term)

6 Images

[Go to Product page](#)

Overview

Quantity:	100 µg
Target:	C5A (C5a)
Binding Specificity:	N-Term
Reactivity:	Rat, Mouse
Host:	Rabbit
Clonality:	Polyclonal
Conjugate:	This C5A antibody is un-conjugated
Application:	Western Blotting (WB), Immunohistochemistry (Paraffin-embedded Sections) (IHC (p))

Product Details

Immunogen:	An amino acid sequence from the N-terminus of rat Complement 5a (DLQLLHQKVVEEQAAYKH) was used as the immunogen for this C5a antibody.
Isotype:	IgG
Purification:	Antigen affinity

Target Details

Target:	C5A (C5a)
Alternative Name:	C5a Complement 5a (C5a Products)
Background:	C5a is a protein fragment released from complement component C5. This gene is mapped to 9q33.2. The protein encoded by this gene is the fifth component of complement, which plays an important role in inflammatory and cell killing processes. This protein is comprised of alpha and

Target Details

beta polypeptide chains that are linked by a disulfide bridge. An activation peptide, C5a, which is an anaphylatoxin that possesses potent spasmogenic and chemotactic activity, is derived from the alpha polypeptide via cleavage with a convertase. The C5b macromolecular cleavage product can form a complex with the C6 complement component, and this complex is the basis for formation of the membrane attack complex, which includes additional complement components. Mutations in this gene cause complement component 5 deficiency, a disease where patients show a propensity for severe recurrent infections. Defects in this gene have also been linked to susceptibility to liver fibrosis and to rheumatoid arthritis.

Gene ID: 362119

Pathways: [Complement System](#), [Carbohydrate Homeostasis](#)

Application Details

Application Notes: The stated application concentrations are suggested starting amounts. Titration of the C5a antibody may be required due to differences in protocols and secondary/substrate sensitivity.\.
Western blot: 0.5-1 µg/mL,IHC (Paraffin): 0.5-1 µg/mL

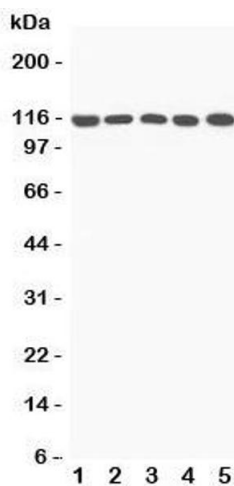
Restrictions: For Research Use only

Handling

Buffer: 0.5 mg/mL if reconstituted with 0.2 mL sterile DI water

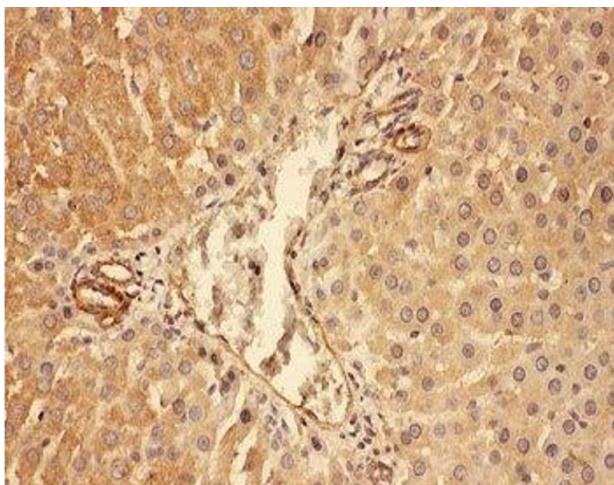
Storage: -20 °C

Storage Comment: After reconstitution, the C5a antibody can be stored for up to one month at 4°C. For long-term, aliquot and store at -20°C. Avoid repeated freezing and thawing.



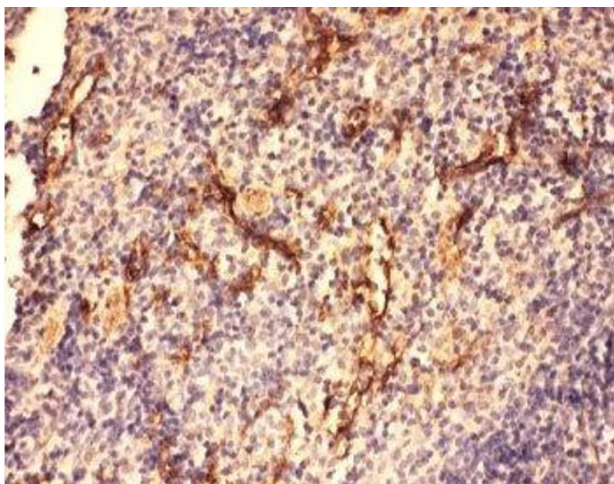
Western Blotting

Image 1. Western blot testing of C5a antibody and Lane 1: rat liver; 2: mouse liver; 3: (m) NIH3T3; 4: (m) HEPA; 5: (r) PC12 lysate; Predicted/Observed size: 115KD



Immunohistochemistry

Image 2. IHC-P: C5a antibody testing of rat liver tissue



Immunohistochemistry

Image 3. IHC-P: C5a antibody testing of mouse spleen tissue

Please check the [product details page](#) for more images. Overall 6 images are available for ABIN3029692.