



[Go to Product page](#)

Datasheet for ABIN3029693  
**anti-C6 antibody (AA 30-58)**

7 Images

Overview

Quantity:	0.4 mL
Target:	C6
Binding Specificity:	AA 30-58
Reactivity:	Human
Host:	Rabbit
Clonality:	Polyclonal
Conjugate:	This C6 antibody is un-conjugated
Application:	Western Blotting (WB), Immunohistochemistry (IHC), ELISA, Flow Cytometry (FACS), Immunofluorescence (IF)

Product Details

Immunogen:	A portion of amino acids 30-58 from the human protein was used as the immunogen for this C6 antibody.
Isotype:	Ig Fraction
Purification:	Antigen affinity purified

Target Details

Target:	C6
Alternative Name:	C6 ( <a href="#">C6 Products</a> )
Background:	C6 is a component of complement cascade. It is part of the membrane attack complex which can insert into the cell membrane and cause cell to lyse. People with C6 deficiency are prone to

## Target Details

bacterial infection.

UniProt: [P13671](#)

## Application Details

Application Notes: Titration of the C6 antibody may be required due to differences in protocols and secondary/substrate sensitivity.\. Western blot: 1:1000,IHC (Paraffin): 1:50-1:100,Flow Cytometry: 1:10-1:50,Immunofluorescence: 1:10-1:50

Restrictions: For Research Use only

## Handling

Format: Liquid

Buffer: In 1X PBS, pH 7.4, with 0.09 % sodium azide

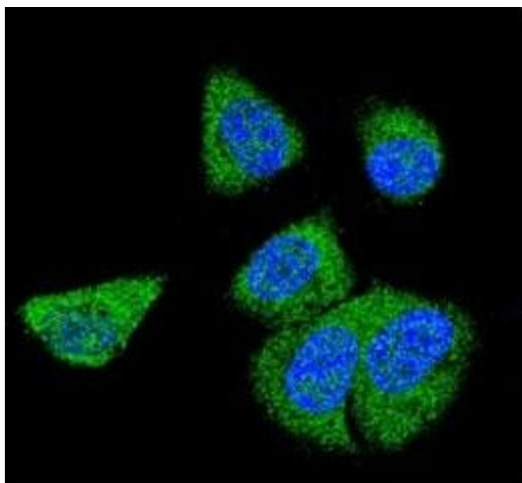
Preservative: Sodium azide

Precaution of Use: This product contains Sodium azide: a POISONOUS AND HAZARDOUS SUBSTANCE which should be handled by trained staff only.

Storage: -20 °C

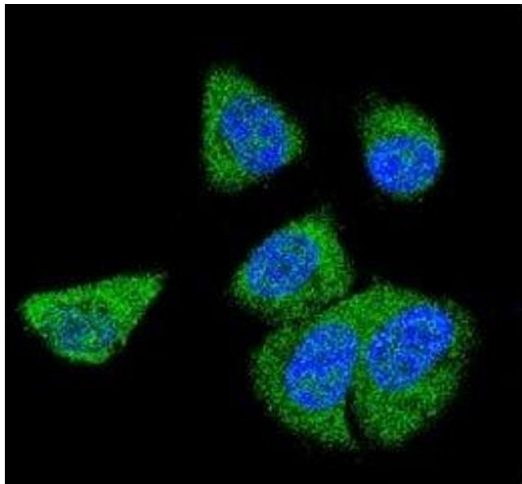
Storage Comment: Aliquot the C6 antibody and store frozen at -20°C or colder. Avoid repeated freeze-thaw cycles.

## Images



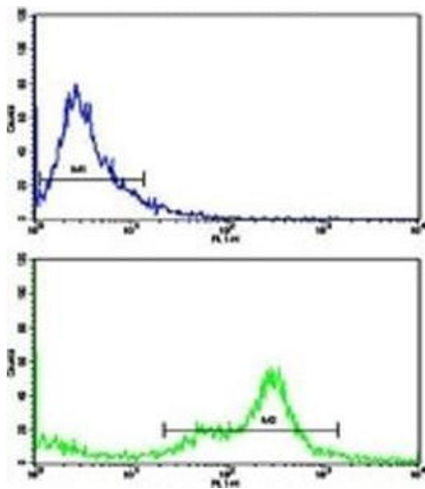
### Immunofluorescence

**Image 1.** Confocal immunofluorescent analysis of C6 antibody with MDA-MB231 cells followed by Alexa Fluor 488-conjugated goat anti-rabbit IgG (green). DAPI was used as a nuclear counterstain (blue).



### Immunofluorescence

**Image 2.** Confocal immunofluorescent analysis of C6 antibody with MDA-MB231 cells followed by Alexa Fluor 488-conjugated goat anti-rabbit IgG (green). DAPI was used as a nuclear counterstain (blue).



### Flow Cytometry

**Image 3.** Flow cytometric analysis of MDA-231 cells using C6 antibody (green) compared to a negative control (blue).

Please check the [product details page](#) for more images. Overall 7 images are available for ABIN3029693.