

Datasheet for ABIN3029705
anti-CT45A1 antibody (AA 1-30)[Go to Product page](#)

3 Images

Overview

Quantity:	0.4 mL
Target:	CT45A1
Binding Specificity:	AA 1-30
Reactivity:	Human
Host:	Rabbit
Clonality:	Polyclonal
Conjugate:	This CT45A1 antibody is un-conjugated
Application:	Western Blotting (WB), ELISA, Flow Cytometry (FACS)

Product Details

Immunogen:	A portion of amino acids 1-30 from the human protein was used as the immunogen for this CT45A antibody.
Isotype:	Ig Fraction
Purification:	Antigen affinity purified

Target Details

Target:	CT45A1
Alternative Name:	CT45A (CT45A1 Products)
Background:	Cancer/testis antigen family 45 member A1
UniProt:	Q5HYN5

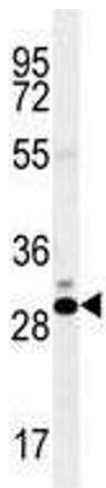
Application Details

Application Notes:	Titration of the CT45A antibody may be required due to differences in protocols and secondary/substrate sensitivity.\. Western blot: 1:1000,Flow Cytometry: 1:10-1:50
Restrictions:	For Research Use only

Handling

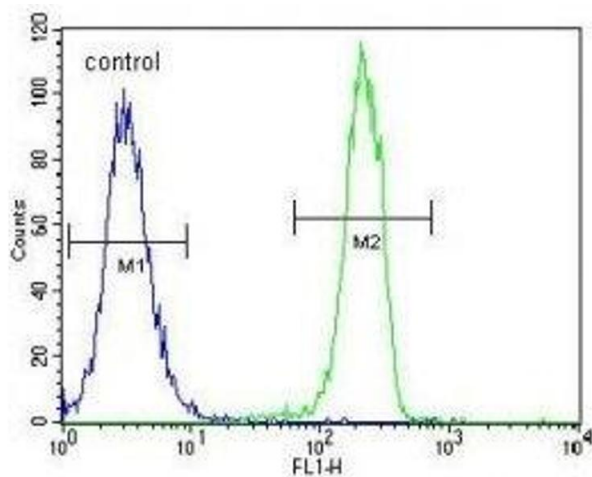
Format:	Liquid
Buffer:	In 1X PBS pH 7.4 with 0.09 % sodium azide
Preservative:	Sodium azide
Precaution of Use:	This product contains Sodium azide: a POISONOUS AND HAZARDOUS SUBSTANCE which should be handled by trained staff only.
Storage:	-20 °C
Storage Comment:	Aliquot the CT45A antibody and store frozen at -20°C or colder. Avoid repeated freeze-thaw cycles.

Images



Western Blotting

Image 1. CT45A antibody western blot analysis in K562 lysate



Flow Cytometry

Image 2. CT45A1 antibody flow cytometric analysis of K562 cells (green) compared to a negative control cell (blue). FITC-conjugated goat-anti-rabbit secondary Ab was used for the analysis.



Western Blotting

Image 3. CT45A antibody western blot analysis in K562 lysate