

Datasheet for ABIN3029707

anti-Cyclin A1 antibody (AA 162-188)**2** Images[Go to Product page](#)

Overview

Quantity:	0.4 mL
Target:	Cyclin A1 (CCNA1)
Binding Specificity:	AA 162-188
Reactivity:	Mouse
Host:	Rabbit
Clonality:	Polyclonal
Conjugate:	This Cyclin A1 antibody is un-conjugated
Application:	Western Blotting (WB), ELISA

Product Details

Immunogen:	A portion of amino acids 162-188 from the mouse protein was used as the immunogen for this Cyclin A antibody.
Isotype:	Ig Fraction
Cross-Reactivity (Details):	Expected species reactivity: Rat
Purification:	Antigen affinity purified

Target Details

Target:	Cyclin A1 (CCNA1)
Alternative Name:	Cyclin A (CCNA1) (CCNA1 Products)
Background:	Ccna1 may be involved in the control of the cell cycle at the G1/S (start) and G2/M (mitosis)

Target Details

transitions. May primarily function in the control of the germline meiotic cell cycle and additionally in the control of mitotic cell cycle in some somatic cells.

UniProt:	Q61456
Pathways:	Apoptosis , Cell Division Cycle , AMPK Signaling , Mitotic G1-G1/S Phases , DNA Replication , M Phase , Synthesis of DNA

Application Details

Application Notes:	Titration of the Cyclin A antibody may be required due to differences in protocols and secondary/substrate sensitivity.\. Western blot: 1:1000
Restrictions:	For Research Use only

Handling

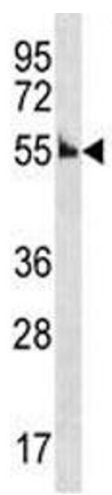
Format:	Liquid
Buffer:	In 1X PBS, pH 7.4, with 0.09 % sodium azide
Preservative:	Sodium azide
Precaution of Use:	This product contains Sodium azide: a POISONOUS AND HAZARDOUS SUBSTANCE which should be handled by trained staff only.
Storage:	-20 °C
Storage Comment:	Aliquot the Cyclin A antibody and store frozen at -20°C or colder. Avoid repeated freeze-thaw cycles.

Images



Western Blotting

Image 1. Cyclin A antibody western blot analysis in mouse kidney tissue lysate. Predicted molecular weight: 50-55 kDa



Western Blotting

Image 2. Cyclin A antibody western blot analysis in mouse kidney tissue lysate. Predicted molecular weight: 50-55 kDa