

Datasheet for ABIN3029711
anti-EPH Receptor B3 antibody (C-Term)[Go to Product page](#)

3 Images

Overview

Quantity:	100 µg
Target:	EPH Receptor B3 (EPHB3)
Binding Specificity:	C-Term
Reactivity:	Human, Mouse, Rat
Host:	Rabbit
Clonality:	Polyclonal
Conjugate:	This EPH Receptor B3 antibody is un-conjugated
Application:	Western Blotting (WB), Immunohistochemistry (Paraffin-embedded Sections) (IHC (p))

Product Details

Immunogen:	An amino acid sequence from the C-terminus of human Eph receptor B3 (SIQDMRLQMNQTLPVQV) was used as the immunogen for this EphB3 antibody (100% homologous in human, mouse and rat).
Isotype:	IgG
Purification:	Antigen affinity

Target Details

Target:	EPH Receptor B3 (EPHB3)
Alternative Name:	EphB3 Ephrin Receptor B3 (EPHB3 Products)
Background:	Ephrin Receptor B3, is also known as human embryo kinase2 (HEK2) or Eph-like tyrosine kinase 2 (ETK2) is a member of the EPH/ELK family of tyrosine kinases. The gene encodes a 998-

Target Details

amino acid polypeptide having a single putative transmembrane domain, a secretory signal sequence, and two fibronectin repeats. The gene is mapped to human chromosome 3q21-qter. EphB3 interacts with two ligands of EPH-related kinases (LERKs), LERK2/EFNB1 and LERK5/EFNB2. Coincubation of EphB3- and LERK2-expressing cells induces cell-cell adhesion and aggregation. Additionally, coexpression of the two proteins results in reduced kinase activity of EphB3.

UniProt: [P54753](#)

Pathways: [RTK Signaling](#)

Application Details

Application Notes: The stated application concentrations are suggested starting amounts. Titration of the EphB3 antibody may be required due to differences in protocols and secondary/substrate sensitivity.\. Western blot: 0.5-1 µg/mL, IHC (Paraffin): 0.5-1 µg/mL

Restrictions: For Research Use only

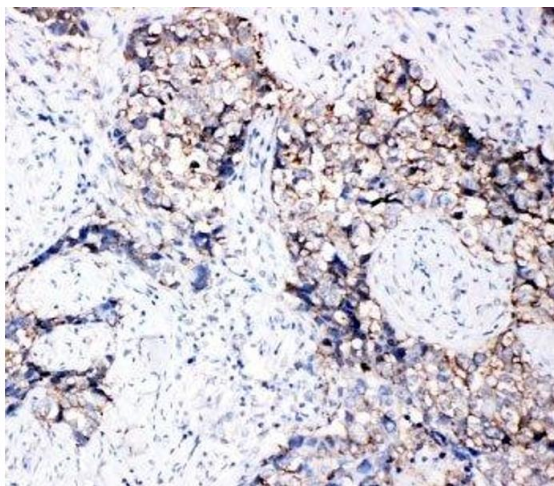
Handling

Buffer: 0.5 mg/mL if reconstituted with 0.2 mL sterile DI water

Storage: -20 °C

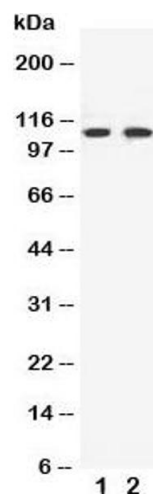
Storage Comment: After reconstitution, the EphB3 antibody can be stored for up to one month at 4°C. For long-term, aliquot and store at -20°C. Avoid repeated freezing and thawing.

Images



Immunohistochemistry

Image 1. IHC-P: EphB3 antibody testing of human lung cancer tissue



Western Blotting

Image 2. Western blot testing of EphB3 antibody and Lane 1: HeLa; 2: A549 cell lysate



Western Blotting

Image 3. Western blot testing of EphB3 antibody and Lane 1: HeLa