



[Go to Product page](#)

Datasheet for ABIN3029730
anti-IDO antibody (N-Term)

2 Images

Overview

Quantity:	100 µg
Target:	IDO
Binding Specificity:	N-Term
Reactivity:	Human
Host:	Rabbit
Clonality:	Polyclonal
Conjugate:	This IDO antibody is un-conjugated
Application:	Western Blotting (WB)

Product Details

Immunogen:	An amino acid sequence from the N-terminus of human Indoleamine 2, 3-dioxygenase (MAHAMENSWTISKEYHIDEE) was used as the immunogen for this IDO antibody.
Isotype:	IgG
Purification:	Antigen affinity

Target Details

Target:	IDO
Alternative Name:	IDO Indoleamine 2, 3-Dioxygenase (IDO Products)
Background:	Indoleamine 2,3-dioxygenase, also called INDO or IDO, is an immunomodulatory enzyme produced by some alternatively activated macrophages and other immunoregulatory cells. This enzyme catalyzes the degradation of the essential amino acid L-tryptophan to N-formyl-

Target Details

kynurenine. By fluorescence in situ hybridization, the assignment is narrowed to chromosome 8p12-p11. IDO-Interferon-gamma interaction has an antiproliferative effect on many tumor cells and inhibits intracellular pathogens such as Toxoplasma and chlamydia, at least partly because of the induction of indoleamine 2,3-dioxygenase. During inflammation, IDO is upregulated in dendritic cells and phagocytes by proinflammatory stimuli, most notably IFNG, and the enzyme then uses superoxide as a 'cofactor' for oxidative cleavage of the indole ring of tryptophan, yielding an intermediate that deformylates to L-kynurenine.

UniProt: [P14902](#)

Application Details

Application Notes: The stated application concentrations are suggested starting amounts. Titration of the IDO antibody may be required due to differences in protocols and secondary/substrate sensitivity.\.
Western blot: 0.5-1 µg/mL

Restrictions: For Research Use only

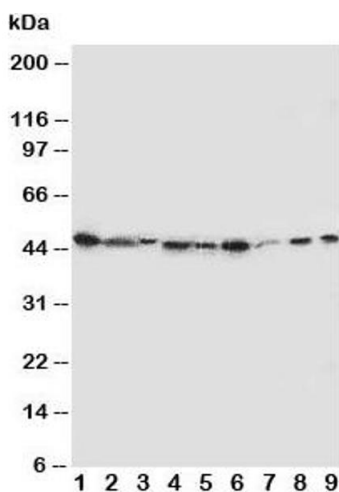
Handling

Buffer: 0.5 mg/mL if reconstituted with 0.2 mL sterile DI water

Storage: -20 °C

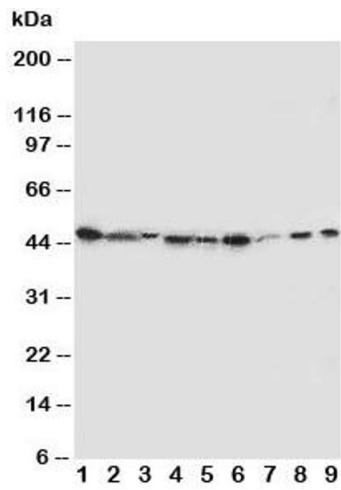
Storage Comment: After reconstitution, the IDO antibody can be stored for up to one month at 4°C. For long-term, aliquot and store at -20°C. Avoid repeated freezing and thawing.

Images



Western Blotting

Image 1. Western blot testing of IDO antibody and Lane 1: SMMC-7721; 2: A549; 3: human placenta; 4: SW620; 5: U87; 6: 293T; 7: A431; 8: HeLa; 9: COLO320 cell lysate



Western Blotting

Image 2. Western blot testing of IDO antibody and Lane 1: SMMC-7721