



[Go to Product page](#)

Datasheet for ABIN3029734
anti-INSRR antibody (AA 1228-1255)

3 Images

Overview

Quantity:	0.4 mL
Target:	INSRR
Binding Specificity:	AA 1228-1255
Reactivity:	Human, Mouse
Host:	Rabbit
Clonality:	Polyclonal
Conjugate:	This INSRR antibody is un-conjugated
Application:	Western Blotting (WB), ELISA

Product Details

Immunogen:	A portion of amino acids 1228-1255 from the mouse protein was used as the immunogen for this Insulin Receptor R antibody.
Isotype:	Ig Fraction
Cross-Reactivity (Details):	Expected species reactivity: Rat
Purification:	Antigen affinity purified

Target Details

Target:	INSRR
Alternative Name:	Insulin Receptor R (INSRR) (INSRR Products)
Background:	This receptor probably binds an insulin related protein and has a tyrosine-protein kinase activity.

Target Details

It phosphorylates the insulin receptor substrates IRS-1 and IRS-2.

UniProt: [Q9WTL4](#)

Pathways: [RTK Signaling](#)

Application Details

Application Notes: Titration of the Insulin Receptor R antibody may be required due to differences in protocols and secondary/substrate sensitivity.\. Western blot: 1:1000

Restrictions: For Research Use only

Handling

Format: Liquid

Buffer: In 1X PBS pH 7.4 with 0.09 % sodium azide

Preservative: Sodium azide

Precaution of Use: This product contains Sodium azide: a POISONOUS AND HAZARDOUS SUBSTANCE which should be handled by trained staff only.

Storage: -20 °C

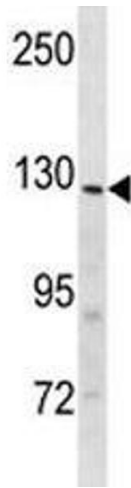
Storage Comment: Aliquot the Insulin Receptor R antibody and store frozen at -20°C or colder. Avoid repeated freeze-thaw cycles.

Images



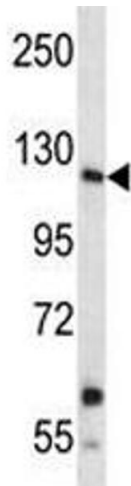
Western Blotting

Image 1. Insulin receptor R antibody western blot analysis in A549 lysate. Expected size: ~80 kDa, 144 kDa



Western Blotting

Image 2. Insulin receptor R antibody western blot analysis in mouse heart tissue lysate



Western Blotting

Image 3. Insulin receptor R antibody western blot analysis in A549 lysate. Expected size: ~80 kDa, 144 kDa