

Datasheet for ABIN3029737  
**anti-Laminin antibody (AA 152-170)**[Go to Product page](#)

## 2 Images

## Overview

Quantity:	100 µg
Target:	Laminin (LAMA2)
Binding Specificity:	AA 152-170
Reactivity:	Human, Mouse, Rat
Host:	Rabbit
Clonality:	Polyclonal
Conjugate:	This Laminin antibody is un-conjugated
Application:	Western Blotting (WB)

## Product Details

Immunogen:	Amino acids 152-170 (WILERSLDDVEYKPWQYHA-human) were used as the immunogen for this LAMA2 antibody (100% mouse homology).
Isotype:	IgG
Purification:	Antigen affinity

## Target Details

Target:	Laminin (LAMA2)
Alternative Name:	LAMA2 Laminin 2 alpha ( <a href="#">LAMA2 Products</a> )
Background:	Laminin 2 alpha is a protein that in humans is encoded by the LAMA2 gene. This gene is mapped to 6q22.33. Laminin, an extracellular protein, is a major component of the basement membrane. It is thought to mediate the attachment, migration, and organization of cells into

Target Details

tissues during embryonic development by interacting with other extracellular matrix components. It is composed of three subunits, alpha, beta, and gamma, which are bound to each other by disulfide bonds into a cross-shaped molecule. This gene encodes the alpha 2 chain, which constitutes one of the subunits of laminin 2 (merosin) and laminin 4 (s-merosin). Mutations in this gene have been identified as the cause of congenital merosin-deficient muscular dystrophy. Two transcript variants encoding different proteins have been found for this gene.

UniProt: [P24043](#)

Application Details

Application Notes: The stated application concentrations are suggested starting points. Titration of the LAMA2 antibody may be required due to differences in protocols and secondary/substrate sensitivity.\. Western blot: 0.5-1 µg/mL

Restrictions: For Research Use only

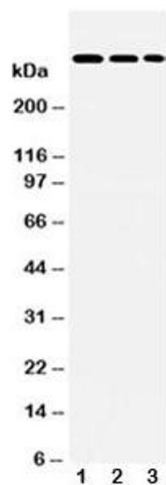
Handling

Buffer: 0.5 mg/mL if reconstituted with 0.2 mL sterile DI water

Storage: -20 °C

Storage Comment: After reconstitution, the LAMA2 antibody can be stored for up to one month at 4°C. For long-term, aliquot and store at -20°C. Avoid repeated freezing and thawing.

Images



**Western Blotting**

**Image 1.** Western blot testing of LAMA2 antibody and Lane 1: HeLa; 2: A549; 3: PANC lysate



Western Blotting

**Image 2.** Western blot testing of LAMA2 antibody and Lane 1: HeLa