

Datasheet for ABIN3029744
anti-NFAT1 antibody (pSer330)



[Go to Product page](#)

2 Images

Overview

Quantity:	0.4 mL
Target:	NFAT1
Binding Specificity:	pSer330
Reactivity:	Human
Host:	Rabbit
Clonality:	Polyclonal
Conjugate:	This NFAT1 antibody is un-conjugated
Application:	ELISA, Dot Blot (DB)

Product Details

Immunogen:	This phospho-NFATC2 antibody was produced from rabbits immunized with a KLH conjugated synthetic phosphopeptide corresponding to amino acid residues surrounding pS330 of human NFATC2.
Isotype:	Ig Fraction
Purification:	Antigen affinity purified

Target Details

Target:	NFAT1
Alternative Name:	NFATC2 (NFAT1 Products)
Background:	NFATC2 is a member of the nuclear factor of activated T cells (NFAT) family. It is a DNA-binding protein with a REL-homology region (RHR) and an NFAT-homology region (NHR). This

Target Details

protein is present in the cytosol and only translocates to the nucleus upon T cell receptor (TCR) stimulation, where it becomes a member of the nuclear factors of activated T cells transcription complex. This complex plays a central role in inducing gene transcription during the immune response.

UniProt: [Q13469](#)

Pathways: [RTK Signaling](#), [WNT Signaling](#), [Fc-epsilon Receptor Signaling Pathway](#), [VEGF Signaling](#), [BCR Signaling](#)

Application Details

Application Notes: Titration of the phospho-NFATC2 antibody may be required due to differences in protocols and secondary/substrate sensitivity.\. Dot blot: 1:500

Restrictions: For Research Use only

Handling

Format: Liquid

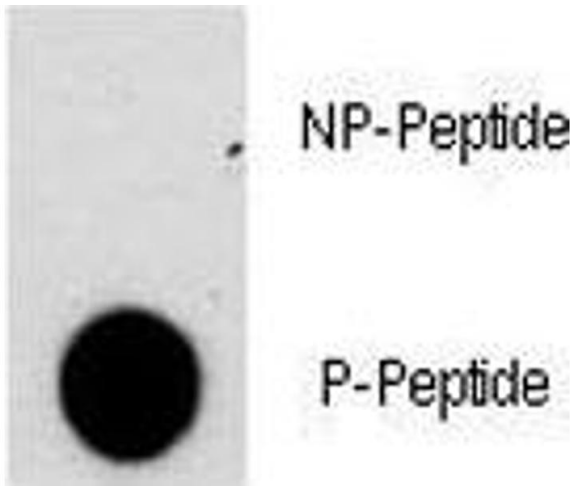
Buffer: In 1X PBS, pH 7.4, with 0.09 % sodium azide

Preservative: Sodium azide

Precaution of Use: This product contains Sodium azide: a POISONOUS AND HAZARDOUS SUBSTANCE which should be handled by trained staff only.

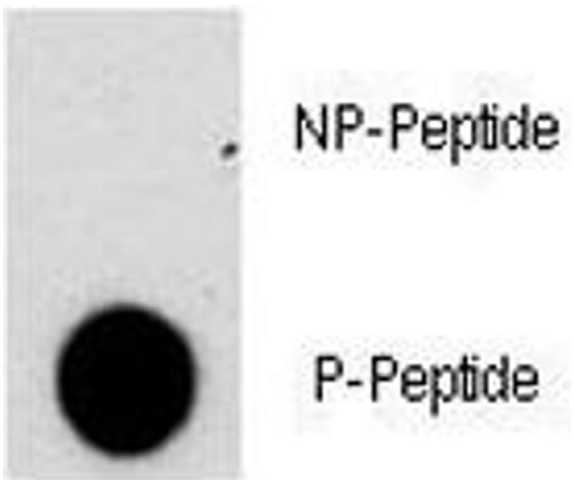
Storage: -20 °C

Storage Comment: Aliquot the phospho-NFATC2 antibody and store frozen at -20°C or colder. Avoid repeated freeze-thaw cycles.



Dot Blot

Image 1. Dot blot analysis of phospho-NFATC2 antibody. 50ng of phos-peptide or nonphos-peptide per dot were spotted.



Dot Blot

Image 2. Dot blot analysis of phospho-NFATC2 antibody. 50ng of phos-peptide or nonphos-peptide per dot were spotted.