



[Go to Product page](#)

Datasheet for ABIN3029750
anti-Pkc beta 1 antibody (AA 542-671)

2 Images

Overview

Quantity:	100 µg
Target:	Pkc beta 1
Binding Specificity:	AA 542-671
Reactivity:	Rat, Human, Mouse
Host:	Rabbit
Clonality:	Polyclonal
Conjugate:	This Pkc beta 1 antibody is un-conjugated
Application:	Western Blotting (WB)

Product Details

Immunogen:	Human partial recombinant protein (AA 542-671) was used as the immunogen for this PKC beta antibody.
Isotype:	IgG
Purification:	Antigen affinity

Target Details

Target:	Pkc beta 1
Alternative Name:	PKC beta 1 (Pkc beta 1 Products)
Background:	Protein kinase C beta type is an enzyme that in humans is encoded by the PRKCB gene. It is a member of the protein kinase C (PKC) gene family. Family members phosphorylate a wide variety of protein targets and are known to be involved in diverse cellular signaling pathways.

Target Details

Family members also serve as major receptors for phorbol esters, a class of tumor promoters. PKC beta has been reported to be involved in many different cellular functions, such as B cell activation, apoptosis induction, endothelial cell proliferation, and intestinal sugar absorption. It has been found that it is activated by oxidative conditions in the cell, induces phosphorylation of [shc](http://www.antibodies-online.com/search_result.php?search_txt=shc) (SHC) and triggers mitochondrial accumulation of the protein after it is recognized by the prolyl isomerase [PIN1](http://www.antibodies-online.com/search_result.php?search_txt=pin1).

Gene ID: 5579

Application Details

Application Notes: The stated application concentrations are suggested starting amounts. Titration of the PKC beta antibody may be required due to differences in protocols and secondary/substrate sensitivity. Western blot: 0.5-1 µg/mL

Restrictions: For Research Use only

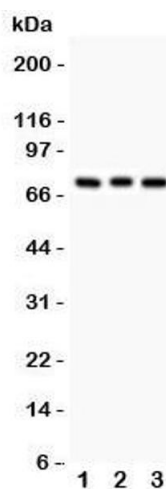
Handling

Buffer: 0.5 mg/mL if reconstituted with 0.2 mL sterile DI water

Storage: -20 °C

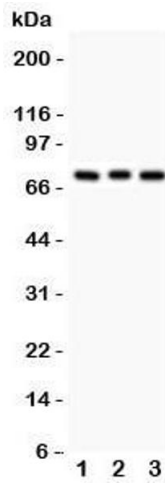
Storage Comment: After reconstitution, the PKC beta antibody can be stored for up to one month at 4°C. For long-term, aliquot and store at -20°C. Avoid repeated freezing and thawing.

Images



Western Blotting

Image 1. Western blot testing of PKC beta antibody and
Lane 1: rat brain; 2: mouse brain; 3: human COLO320.
Predicted/observed size ~76KD



Western Blotting

Image 2. Western blot testing of PKC beta antibody and
Lane 1: rat brain