

Datasheet for ABIN3029771
anti-TUBb6 antibody (AA 139-166)[Go to Product page](#)

2 Images

Overview

Quantity:	0.4 mL
Target:	TUBb6
Binding Specificity:	AA 139-166
Reactivity:	Human
Host:	Rabbit
Clonality:	Polyclonal
Conjugate:	This TUBb6 antibody is un-conjugated
Application:	Western Blotting (WB), ELISA

Product Details

Immunogen:	A portion of amino acids 139-166 from the human protein was used as the immunogen for this TUBB6 antibody.
Isotype:	Ig Fraction
Cross-Reactivity (Details):	Expected species reactivity: Mouse, Bovine, Primate
Purification:	Antigen affinity purified

Target Details

Target:	TUBb6
Alternative Name:	TUBB6 (Tubulin beta 6) (TUBb6 Products)
Background:	Tubulin is the major constituent of microtubules. It binds two moles of GTP, one at an

Target Details

exchangeable site on the beta chain and one at a non-exchangeable site on the alpha-chain (By similarity).

UniProt: [Q9BUF5](#)

Pathways: [Microtubule Dynamics](#)

Application Details

Application Notes: Titration of the TUBB6 antibody may be required due to differences in protocols and secondary/substrate sensitivity.\. Western blot: 1:1000

Restrictions: For Research Use only

Handling

Format: Liquid

Buffer: In 1X PBS pH 7.4 with 0.09 % sodium azide

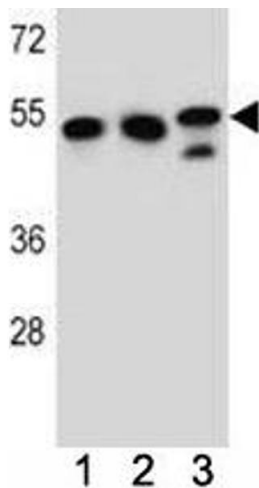
Preservative: Sodium azide

Precaution of Use: This product contains Sodium azide: a POISONOUS AND HAZARDOUS SUBSTANCE which should be handled by trained staff only.

Storage: -20 °C

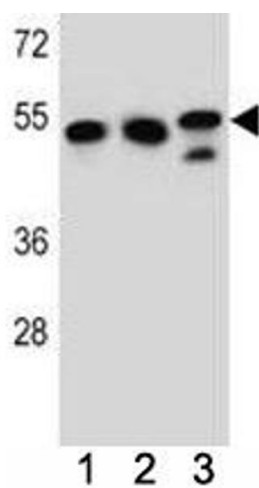
Storage Comment: Aliquot the TUBB6 antibody and store frozen at -20°C or colder. Avoid repeated freeze-thaw cycles.

Images



Western Blotting

Image 1. TUBB6 antibody western blot analysis in K562, HeLa, MDA-MB231 lysate.



Western Blotting

Image 2. TUBB6 antibody western blot analysis in K562, HeLa, MDA-MB231 lysate.