



[Go to Product page](#)

Datasheet for ABIN3029772

## anti-Tubulin, beta 8 antibody (AA 34-62)

### 2 Images

#### Overview

Quantity:	0.4 mL
Target:	Tubulin, beta 8 (TUBB8)
Binding Specificity:	AA 34-62
Reactivity:	Human
Host:	Rabbit
Clonality:	Polyclonal
Conjugate:	This Tubulin, beta 8 antibody is un-conjugated
Application:	Western Blotting (WB), ELISA

#### Product Details

Immunogen:	A portion of amino acids 34-62 from the human protein was used as the immunogen for this TUBB8 antibody.
Isotype:	Ig Fraction
Purification:	Antigen affinity purified

#### Target Details

Target:	Tubulin, beta 8 (TUBB8)
Alternative Name:	TUBB8 (Tubulin beta 8) ( <a href="#">TUBB8 Products</a> )
Background:	Tubulin is the major constituent of microtubules. It binds two moles of GTP, one at an exchangeable site on the beta chain and one at a non-exchangeable site on the alpha-chain (By similarity).

## Target Details

UniProt: [Q3ZCM7](#)

## Application Details

Application Notes: Titration of the TUBB8 antibody may be required due to differences in protocols and secondary/substrate sensitivity.\. Western blot: 1:1000

Restrictions: For Research Use only

## Handling

Format: Liquid

Buffer: In 1X PBS pH 7.4 with 0.09 % sodium azide

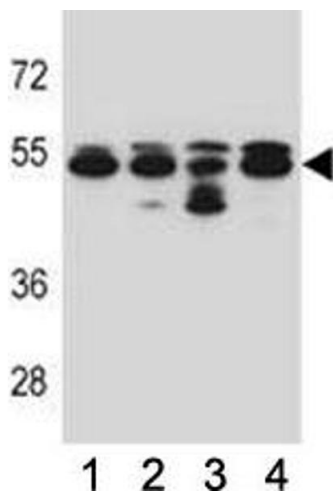
Preservative: Sodium azide

Precaution of Use: This product contains Sodium azide: a POISONOUS AND HAZARDOUS SUBSTANCE which should be handled by trained staff only.

Storage: -20 °C

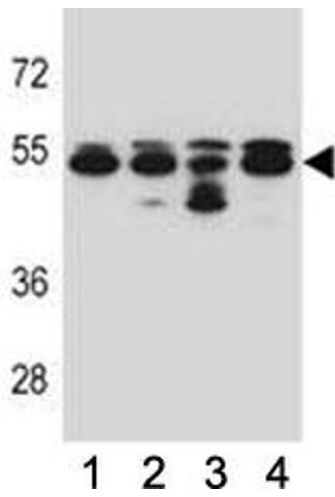
Storage Comment: Aliquot the TUBB8 antibody and store frozen at -20°C or colder. Avoid repeated freeze-thaw cycles.

## Images



### Western Blotting

**Image 1.** TUBB8 antibody western blot analysis in 293, A549, HepG2, K562 lysate.



### Western Blotting

**Image 2.** TUBB8 antibody western blot analysis in 293, A549, HepG2, K562 lysate.