



[Go to Product page](#)

Datasheet for ABIN3029779
anti-ZGRF1 antibody (AA 38-66)

7 Images

Overview

Quantity:	0.4 mL
Target:	ZGRF1
Binding Specificity:	AA 38-66
Reactivity:	Human, Mouse
Host:	Rabbit
Clonality:	Polyclonal
Conjugate:	This ZGRF1 antibody is un-conjugated
Application:	ELISA, Western Blotting (WB), Immunofluorescence (IF), Immunohistochemistry (IHC)

Product Details

Immunogen:	A portion of amino acids 38-66 from the human protein was used as the immunogen for this ZGRF1 antibody.
Isotype:	Ig Fraction
Purification:	Antigen affinity purified

Target Details

Target:	ZGRF1
Alternative Name:	ZGRF1 (ZGRF1 Products)
Background:	GRF-type zinc finger domain-containing protein 1
UniProt:	Q86YA3

Application Details

Application Notes: Titration of the ZGRF1 antibody may be required due to differences in protocols and secondary/substrate sensitivity.\. Western blot: 1:1000,IHC (Paraffin): 1:50-1:100,Immunofluorescence: 1:10-1:50

Restrictions: For Research Use only

Handling

Format: Liquid

Buffer: In 1X PBS, pH 7.4, with 0.09 % sodium azide

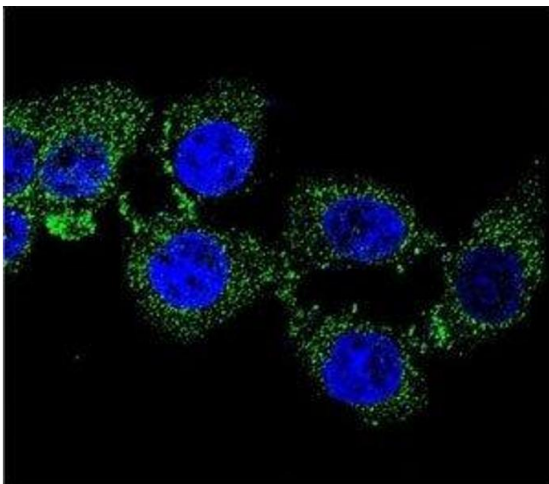
Preservative: Sodium azide

Precaution of Use: This product contains Sodium azide: a POISONOUS AND HAZARDOUS SUBSTANCE which should be handled by trained staff only.

Storage: -20 °C

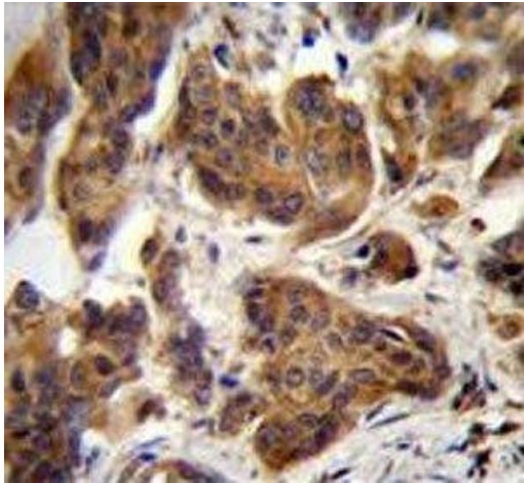
Storage Comment: Aliquot the ZGRF1 antibody and store frozen at -20°C or colder. Avoid repeated freeze-thaw cycles.

Images



Immunofluorescence

Image 1. Confocal immunofluorescent analysis of ZGRF1 antibody with 293 cells followed by Alexa Fluor 488-conjugated goat anti-rabbit IgG (green). DAPI was used as a nuclear counterstain (blue).



Immunohistochemistry

Image 2. ZGRF1 antibody immunohistochemistry analysis in formalin fixed and paraffin embedded human bladder carcinoma.



Western Blotting

Image 3. ZGRF1 antibody western blot analysis in mouse Neuro-2a lysate

Please check the [product details page](#) for more images. Overall 7 images are available for ABIN3029779.