

Datasheet for ABIN3029794

**anti-TUBB1 antibody**

5 Images

[Go to Product page](#)

## Overview

|              |   |
|--------------|---|
| Quantity:    | 0.4 mL  |
| Target:      | TUBB1   |
| Reactivity:  | Human, Mouse  |
| Host:        | Mouse   |
| Clonality:   | Monoclonal  |
| Conjugate:   | This TUBB1 antibody is un-conjugated  |
| Application: | Western Blotting (WB), ELISA, Immunohistochemistry (IHC), Immunofluorescence (IF) |

## Product Details

|               |  |
|---------------|--|
| Immunogen:    | This b-Tubulin antibody was produced from mice immunized with recombinant human TUBB1. |
| Clone:        | 86CT4-4-4  |
| Isotype:      | IgG1   |
| Purification: | Purified   |

## Target Details

|                   |   |
|-------------------|---|
| Target:           | TUBB1   |
| Alternative Name: | Tubulin beta 1 (TUBB1) ( <a href="#">TUBB1 Products</a> )   |
| Background:       | This gene encodes a member of the beta tubulin protein family. Beta tubulins are one of two core protein families (alpha and beta tubulins) that heterodimerize and assemble to form microtubules. Tubulin beta-1 chain is specifically expressed in platelets and megakaryocytes and may be involved in proplatelet production and platelet release. A mutations in this gene is |

## Target Details

associated with autosomal dominant macrothrombocytopenia. Two pseudogenes of this gene are found on chromosome Y.

UniProt: [Q9H4B7](#)

Pathways: [Microtubule Dynamics](#)

## Application Details

Application Notes: Titration of the b-Tubulin antibody may be required due to differences in protocols and secondary/substrate sensitivity. Western blot: 1:100-1:500, IHC (Paraffin): 1:10-1:50, Immunofluorescence: 1:10-1:50

Restrictions: For Research Use only

## Handling

Format: Liquid

Buffer: In 1X PBS pH 7.4 with 0.09 % sodium azide

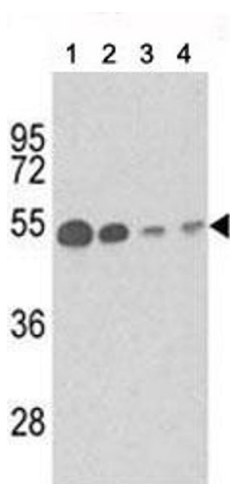
Preservative: Sodium azide

Precaution of Use: This product contains Sodium azide: a POISONOUS AND HAZARDOUS SUBSTANCE which should be handled by trained staff only.

Storage: -20 °C

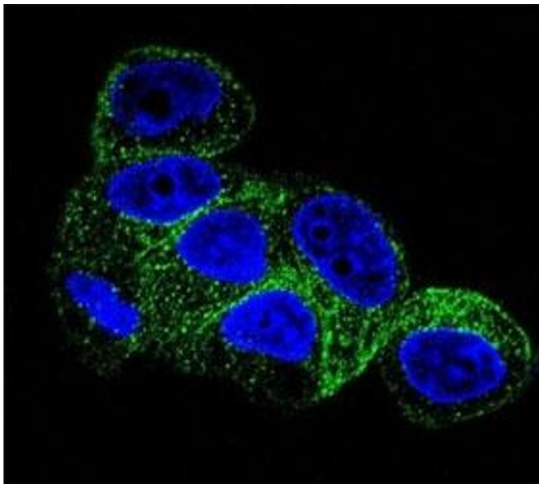
Storage Comment: Aliquot the b-Tubulin antibody and store frozen at -20°C or colder. Avoid repeated freeze-thaw cycles.

## Images



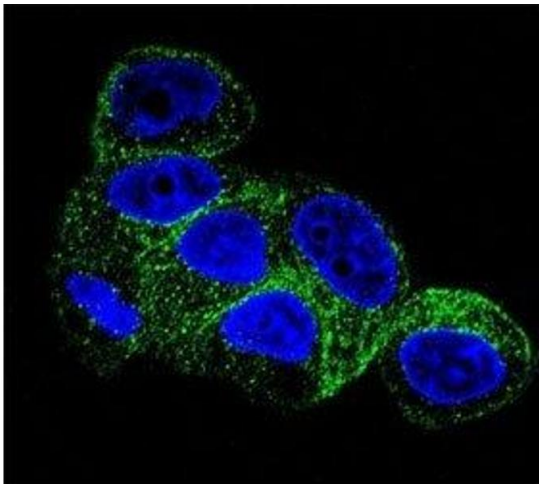
### Western Blotting

**Image 1.** Western blot analysis of b-Tubulin antibody and (1) mouse brain tissue, (2) Y79, (3) CEM and (4) 293 lysate.



#### Immunofluorescence

**Image 2.** Confocal immunofluorescent analysis of b-Tubulin antibody with HepG2 cells followed by Alexa Fluor 488-conjugated goat anti-mouse IgG (green). DAPI was used as a nuclear counterstain (blue).



#### Immunofluorescence

**Image 3.** Confocal immunofluorescent analysis of b-Tubulin antibody with HepG2 cells followed by Alexa Fluor 488-conjugated goat anti-mouse IgG (green). DAPI was used as a nuclear counterstain (blue).

Please check the [product details page](#) for more images. Overall 5 images are available for ABIN3029794.