



[Go to Product page](#)

Datasheet for ABIN3029795
anti-BACE2C antibody (AA 310-339)

3 Images

Overview

Quantity:	0.4 mL
Target:	BACE2C (BACE2 C)
Binding Specificity:	AA 310-339
Reactivity:	Human
Host:	Rabbit
Clonality:	Polyclonal
Conjugate:	This BACE2C antibody is un-conjugated
Application:	Western Blotting (WB), Immunohistochemistry (IHC), ELISA

Product Details

Immunogen:	A portion of amino acids 310-339 from the human protein was used as the immunogen for this BACE2C antibody.
Isotype:	Ig Fraction
Purification:	Purified

Target Details

Target:	BACE2C (BACE2 C)
Alternative Name:	BACE2C (BACE2 C Products)
Background:	Amyloid-beta peptide aggregation is a signature of Alzheimer disease and a frequent complication of adult Down syndrome patients. Amyloid-beta is generated by proteolytic processing of the amyloid precursor protein (APP) by beta- and gamma-secretase at the N and

Target Details

C termini, respectively. Presenilin-1 is involved in the gamma-secretase activity. BACE is a transmembrane aspartyl protease with beta-secretase activity. BACE2, also termed ALP56 has 2 pepsin-like active centers, a signal sequence, a propeptide, and a long C-terminal extension including a transmembrane domain, with expression in a wide array of tissues. Northern blot analysis revealed low expression of 2.0- and 2.6-kb BACE2 transcripts in most fetal and adult tissues, with higher expression in adult colon, kidney, pancreas, placenta, prostate, stomach, and trachea. Low levels were also detected in brain, with somewhat higher expression in medulla and spinal cord. In situ hybridization analysis of rat brain found low-level BACE2 expression in contrast to BACE expression. The BACE2 expression pattern does not appear to be consistent with that of a beta-secretase. BACE2 has been mapped to 21q22.3, within the Down syndrome critical region.

UniProt: [Q9Y5Z0](#)

Application Details

Application Notes: Titration of the BACE2C antibody may be required due to differences in protocols and secondary/substrate sensitivity.\. Western blot: 1:1000,IHC (Paraffin): 1:50-1:100

Restrictions: For Research Use only

Handling

Format: Liquid

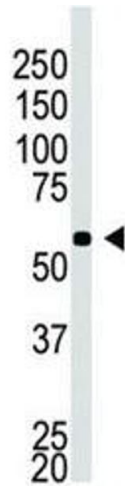
Buffer: In 1X PBS pH 7.4 with 0.09 % sodium azide

Preservative: Sodium azide

Precaution of Use: This product contains Sodium azide: a POISONOUS AND HAZARDOUS SUBSTANCE which should be handled by trained staff only.

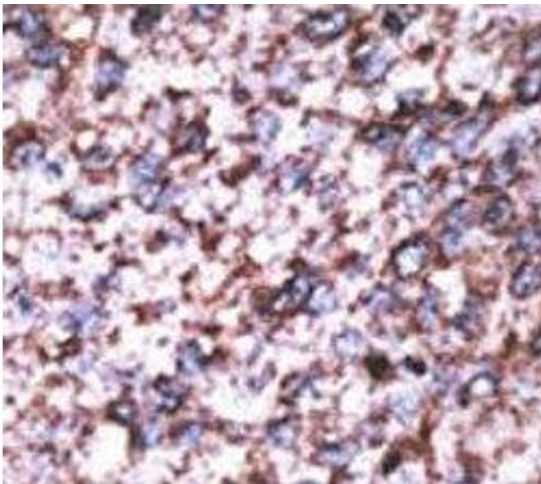
Storage: -20 °C

Storage Comment: Aliquot the BACE2C antibody and store frozen at -20°C or colder. Avoid repeated freeze-thaw cycles.



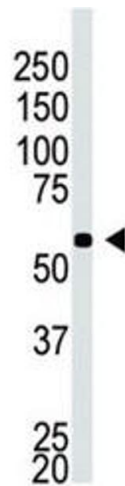
Western Blotting

Image 1. Western blot testing of BACE2C antibody and A549 cell lysate



Immunohistochemistry

Image 2. IHC analysis of FFPE human hepatocarcinoma stained with the BACE2C antibody



Western Blotting

Image 3. Western blot testing of BACE2C antibody and A549 cell lysate