

Datasheet for ABIN3029798
anti-PRKG1 antibody (AA 629-660)[Go to Product page](#)

3 Images

Overview

Quantity:	0.4 mL
Target:	PRKG1
Binding Specificity:	AA 629-660
Reactivity:	Human, Mouse
Host:	Rabbit
Clonality:	Polyclonal
Conjugate:	This PRKG1 antibody is un-conjugated
Application:	Western Blotting (WB), Immunohistochemistry (IHC), ELISA

Product Details

Immunogen:	A portion of amino acids 629-660 from the human protein was used as the immunogen for this cGKI beta antibody.
Isotype:	Ig Fraction
Cross-Reactivity (Details):	Expected species reactivity: Bovine
Purification:	Purified

Target Details

Target:	PRKG1
Alternative Name:	cGKI beta (PRKG1 Products)
Background:	Protein kinases are enzymes that transfer a phosphate group from a phosphate donor,

Target Details

generally the γ phosphate of ATP, onto an acceptor amino acid in a substrate protein. By this basic mechanism, protein kinases mediate most of the signal transduction in eukaryotic cells, regulating cellular metabolism, transcription, cell cycle progression, cytoskeletal rearrangement and cell movement, apoptosis, and differentiation. With more than 500 gene products, the protein kinase family is one of the largest families of proteins in eukaryotes. The family has been classified in 8 major groups based on sequence comparison of their tyrosine (PTK) or serine/threonine (STK) kinase catalytic domains.

UniProt: [Q13976](#)

Application Details

Application Notes: Titration of the cGKI beta antibody may be required due to differences in protocols and secondary/substrate sensitivity.\. Western blot: 1:1000,IHC (Paraffin): 1:50-1:100

Restrictions: For Research Use only

Handling

Format: Liquid

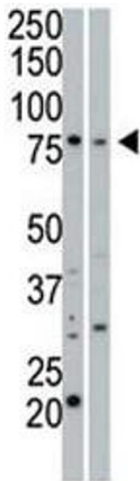
Buffer: In 1X PBS pH 7.4 with 0.09 % sodium azide

Preservative: Sodium azide

Precaution of Use: This product contains Sodium azide: a POISONOUS AND HAZARDOUS SUBSTANCE which should be handled by trained staff only.

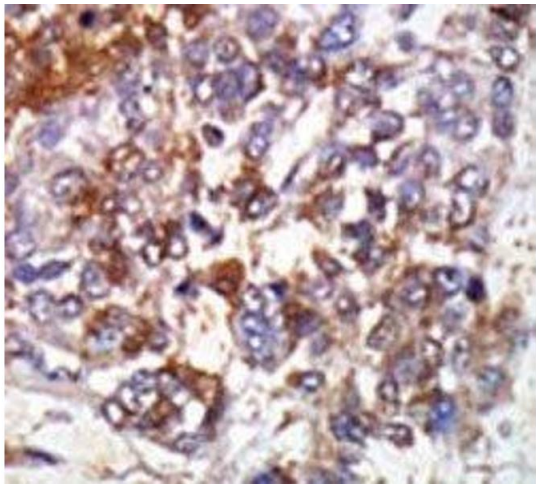
Storage: -20 °C

Storage Comment: Aliquot the cGKI beta antibody and store frozen at -20°C or colder. Avoid repeated freeze-thaw cycles.



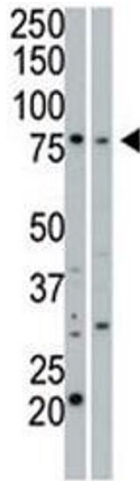
Western Blotting

Image 1. cGKI beta antibody used in western blot to detect cGKIbeta in 293 cell lysate (Lane 1) and mouse small intestine tissue lysate (2).



Immunohistochemistry

Image 2. IHC analysis of FFPE human hepatocarcinoma stained with the cGKI beta antibody



Western Blotting

Image 3. cGKI beta antibody used in western blot to detect cGKIbeta in 293 cell lysate (Lane 1) and mouse small intestine tissue lysate (2).