

Datasheet for ABIN3029799

**anti-Actin, gamma 1 antibody (AA 188-215)**

## 7 Images

[Go to Product page](#)

## Overview

Quantity:	0.4 mL
Target:	Actin, gamma 1 (ACTG1)
Binding Specificity:	AA 188-215
Reactivity:	Human
Host:	Rabbit
Clonality:	Polyclonal
Conjugate:	This Actin, gamma 1 antibody is un-conjugated
Application:	Western Blotting (WB), ELISA, Immunofluorescence (IF), Flow Cytometry (FACS)

## Product Details

Immunogen:	A portion of amino acids 188-215 from human ACTG1 was used as the immunogen for this g-Actin antibody.
Isotype:	Ig Fraction
Cross-Reactivity (Details):	Expected species reactivity: Mouse, Rat, Bovine, Chicken, Zebrafish, Rabbit, Xenopus, Drosophila, C. elegans
Purification:	Purified

## Target Details

Target:	Actin, gamma 1 (ACTG1)
Alternative Name:	Actin (gamma, ACTG1) ( <a href="#">ACTG1 Products</a> )

## Target Details

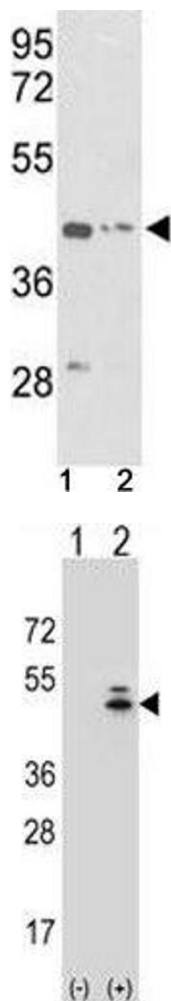
Background:	Actins are highly conserved proteins that are involved in various types of cell motility, and maintenance of the cytoskeleton. In vertebrates, three main groups of actin isoforms, alpha, beta and gamma have been identified. The alpha actins are found in muscle tissues and are a major constituent of the contractile apparatus. The beta and gamma actins co-exist in most cell types as components of the cytoskeleton, and as mediators of internal cell motility. Actin, gamma 1, is a cytoplasmic actin found in nonmuscle cells.
UniProt:	<a href="#">P63261</a>
Pathways:	<a href="#">Myometrial Relaxation and Contraction</a> , <a href="#">Cell-Cell Junction Organization</a>

## Application Details

Application Notes:	Titration of the g-Actin antibody may be required due to differences in protocols and secondary/substrate sensitivity.\. Western blot: 1:1000,Flow Cytometry: 1:10-1:50,Immunofluorescence: 1:10-1:50
Restrictions:	For Research Use only

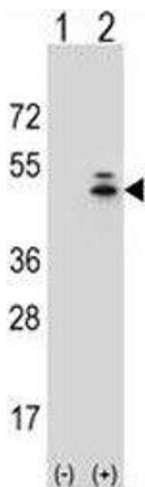
## Handling

Format:	Liquid
Buffer:	In 1X PBS, pH 7.4, with 0.09 % sodium azide
Preservative:	Sodium azide
Precaution of Use:	This product contains Sodium azide: a POISONOUS AND HAZARDOUS SUBSTANCE which should be handled by trained staff only.
Storage:	-20 °C
Storage Comment:	Aliquot the g-Actin antibody and store frozen at -20°C or colder. Avoid repeated freeze-thaw cycles.



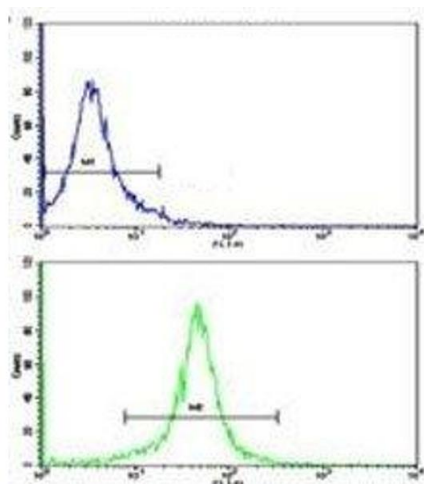
Western Blotting

**Image 1.** Western blot analysis of g-Actin antibody and (1) K562 and (2) HepG2 lysate



Western Blotting

**Image 2.** Western blot analysis of g-Actin antibody and 293 cell lysate (2 ug/lane) either nontransfected (Lane 1) or transiently transfected (2) with the ACTG1 gene.



Flow Cytometry

**Image 3.** Flow cytometric analysis of K562 cells using g-Actin antibody (green)

Please check the [product details page](#) for more images. Overall 7 images are available for ABIN3029799.