

Datasheet for ABIN3029800

anti-GAPDH antibody (AA 62-91)

10 Images

[Go to Product page](#)

Overview

Quantity:	0.4 mL
Target:	GAPDH
Binding Specificity:	AA 62-91
Reactivity:	Human
Host:	Rabbit
Clonality:	Polyclonal
Conjugate:	This GAPDH antibody is un-conjugated
Application:	Western Blotting (WB), ELISA, Immunohistochemistry (IHC), Immunofluorescence (IF)

Product Details

Immunogen:	A portion of amino acids 62-91 from the human protein was used as the immunogen for this anti-GAPDH antibody.
Isotype:	Ig Fraction
Purification:	Purified

Target Details

Target:	GAPDH
Alternative Name:	GAPDH (GAPDH Products)
Background:	GAPDH catalyzes an important energy-yielding step in carbohydrate metabolism, the reversible oxidative phosphorylation of glyceraldehyde-3-phosphate in the presence of inorganic phosphate and nicotinamide adenine dinucleotide (NAD). The enzyme exists as a tetramer of

Target Details

identical chains.

UniProt: [P04406](#)

Application Details

Application Notes: The stated application concentrations are suggested starting amounts. Titration of the anti-GAPDH antibody may be required due to differences in protocols and secondary/substrate sensitivity.\. Western blot: 1:500-1000,IHC (Paraffin): 1:10-1:50,Immunofluorescence: 1:10-1:50

Restrictions: For Research Use only

Handling

Format: Liquid

Buffer: In 1X PBS pH 7.4 with 0.09 % sodium azide

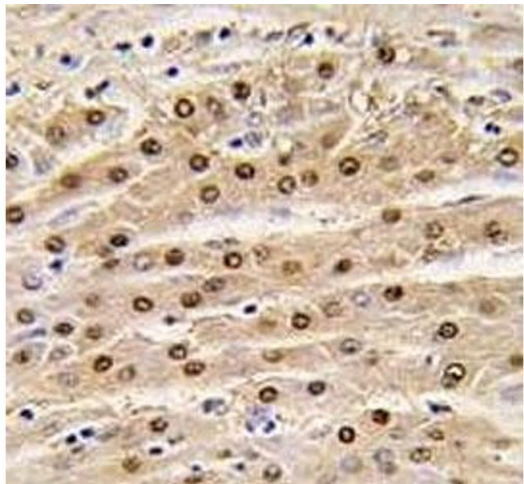
Preservative: Sodium azide

Precaution of Use: This product contains Sodium azide: a POISONOUS AND HAZARDOUS SUBSTANCE which should be handled by trained staff only.

Storage: -20 °C

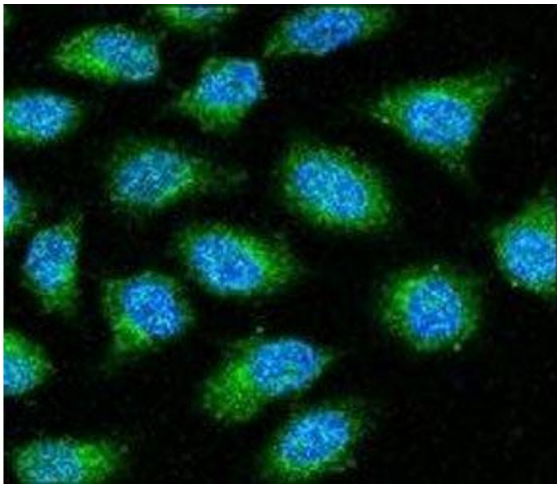
Storage Comment: Aliquot the anti-GAPDH antibody and store frozen at -20°C or colder. Avoid repeated freeze-thaw cycles.

Images



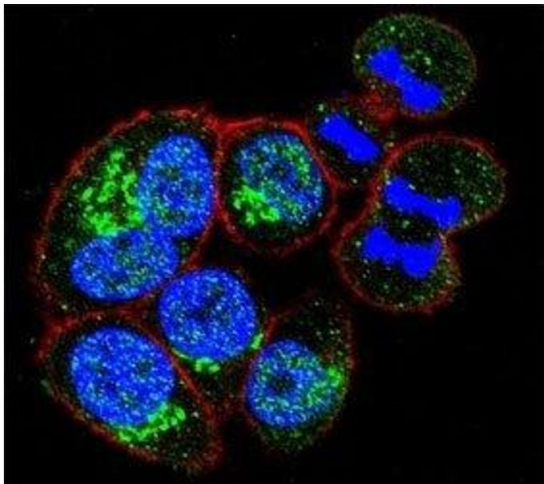
Immunohistochemistry

Image 1. IHC analysis of FFPE human hepatocarcinoma tissue stained with anti-GAPDH antibody



Immunofluorescence

Image 2. Anti-GAPDH antibody confocal immunofluorescent analysis with HeLa cell. Primary antibody (1:20) was followed by FITC-conjugated goat anti-rabbit IgG. FITC emits green fluorescence. DAPI was used as a nuclear counterstain (blue).



Immunofluorescence

Image 3. Confocal immunofluorescent analysis of anti-GAPDH antibody with HeLa cells followed by Alexa Fluor 488-conjugated goat anti-rabbit IgG (green). Actin filaments have been labeled with Alexa Fluor 555 Phalloidin (red). DAPI was used as a nuclear counterstain.

Please check the [product details page](#) for more images. Overall 10 images are available for ABIN3029800.