

Datasheet for ABIN3029807

anti-ITGA6 antibody**6** Images[Go to Product page](#)

Overview

Quantity:	0.4 mL
Target:	ITGA6
Reactivity:	Human
Host:	Mouse
Clonality:	Monoclonal
Conjugate:	This ITGA6 antibody is un-conjugated
Application:	Flow Cytometry (FACS), Immunohistochemistry (IHC), ELISA, Immunofluorescence (IF)

Product Details

Immunogen:	ITA6 recombinant protein was used to produce this monoclonal antibody.
Clone:	129CT49-6-5
Isotype:	IgG1
Purification:	Purified

Target Details

Target:	ITGA6
Alternative Name:	ITA6 (ITGA6 Products)
Background:	The ITGA6 protein product is the integrin alpha chain alpha 6. Integrins are integral cell-surface proteins composed of an alpha chain and a beta chain. A given chain may combine with multiple partners resulting in different integrins. For example, alpha 6 may combine with beta 4 in the integrin referred to as TSP180, or with beta 1 in the integrin VLA-6. Integrins are known to

Target Details

participate in cell adhesion as well as cell-surface mediated signalling. Two transcript variants encoding different isoforms have been found for this gene.

UniProt: [P23229](#)

Pathways: [CXCR4-mediated Signaling Events](#), [Brown Fat Cell Differentiation](#), [Integrin Complex](#)

Application Details

Application Notes: Titration of the ITA6 antibody may be required due to differences in protocols and secondary/substrate sensitivity.\. IHC (Paraffin): 1:10-1:50,Immunofluorescence: 1:10-1:50,Flow Cytometry: 1:10-1:50

Restrictions: For Research Use only

Handling

Format: Liquid

Buffer: In 1X PBS pH 7.4 with 0.09 % sodium azide

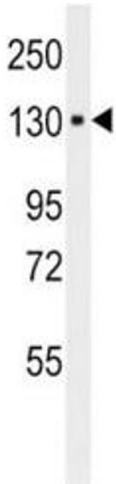
Preservative: Sodium azide

Precaution of Use: This product contains Sodium azide: a POISONOUS AND HAZARDOUS SUBSTANCE which should be handled by trained staff only.

Storage: -20 °C

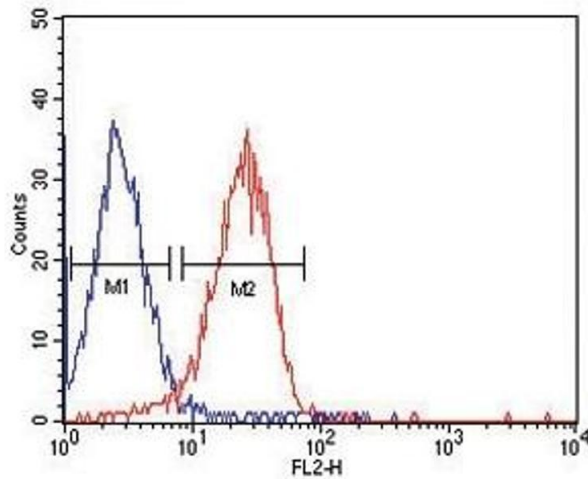
Storage Comment: Aliquot the ITA6 antibody and store frozen at -20°C or colder. Avoid repeated freeze-thaw cycles.

Images



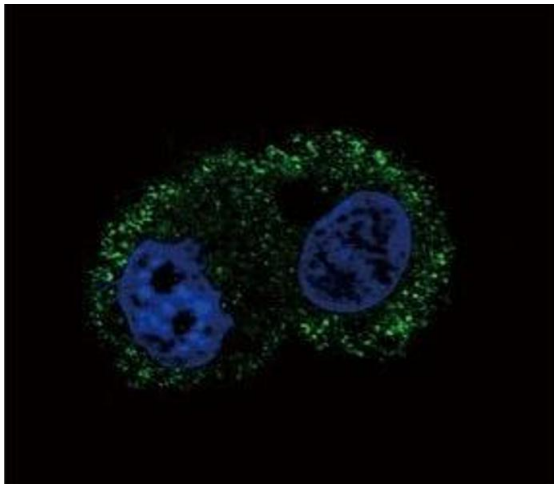
Western Blotting

Image 1. Western blot analysis of ITA6 antibody and HepG2 lysate



Flow Cytometry

Image 2. ITA6 antibody flow cytometric analysis of HepG2 cells (red) compared to a negative control cell (blue). PE-conjugated goat-anti-mouse secondary Ab was used for the analysis.



Immunofluorescence

Image 3. Confocal immunofluorescent analysis of ITA6 antibody with HepG2 cells followed by Alexa Fluor 488-conjugated goat anti-mouse IgG (green). DAPI was used as a nuclear counterstain (blue).

Please check the [product details page](#) for more images. Overall 6 images are available for ABIN3029807.