

Datasheet for ABIN3029811  
**anti-PDGFRB antibody (AA 40-72)**



[Go to Product page](#)

6 Images

## Overview

Quantity:	0.4 mL
Target:	PDGFRB
Binding Specificity:	AA 40-72
Reactivity:	Human
Host:	Rabbit
Clonality:	Polyclonal
Conjugate:	This PDGFRB antibody is un-conjugated
Application:	Western Blotting (WB), ELISA, Immunohistochemistry (IHC), Immunofluorescence (IF), Flow Cytometry (FACS)

## Product Details

Immunogen:	A portion of amino acids 40-72 from the human protein was used as the immunogen for this CD140b / PDGFR beta antibody.
Isotype:	Ig Fraction
Purification:	Purified

## Target Details

Target:	PDGFRB
Alternative Name:	PDGFR beta (CD140b) ( <a href="#">PDGFRB Products</a> )
Background:	PDGFRB is a cell surface tyrosine kinase receptor for members of the platelet-derived growth factor family. These growth factors are mitogens for cells of mesenchymal origin. The identity

## Target Details

of the growth factor bound to a receptor monomer determines whether the functional receptor is a homodimer or a heterodimer, composed of both platelet-derived growth factor receptor alpha and beta polypeptides. The gene is flanked on chromosome 5 by the genes for granulocyte-macrophage colony-stimulating factor and macrophage-colony stimulating factor receptor, all three genes may be implicated in the 5-q syndrome. A translocation between chromosomes 5 and 12, that fuses the gene to that of the translocation, ETS, leukemia gene, results in chronic myelomonocytic leukemia.

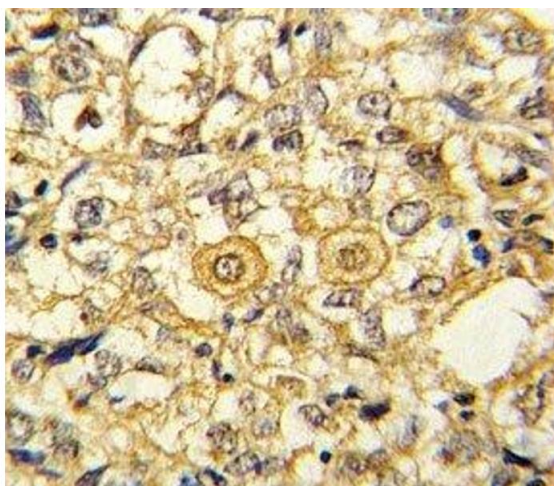
UniProt:	<a href="#">P09619</a>
Pathways:	<a href="#">Fc-epsilon Receptor Signaling Pathway</a> , <a href="#">EGFR Signaling Pathway</a> , <a href="#">Neurotrophin Signaling Pathway</a> , <a href="#">Inositol Metabolic Process</a> , <a href="#">Glycosaminoglycan Metabolic Process</a> , <a href="#">Smooth Muscle Cell Migration</a> , <a href="#">Platelet-derived growth Factor Receptor Signaling</a>

## Application Details

Application Notes:	The stated application concentrations are suggested starting amounts. Titration of the PDGFR beta antibody may be required due to differences in protocols and secondary/substrate sensitivity.\. IHC (Paraffin): 1:10-1:50,Immunofluorescence: 1:10-1:50,Flow Cytometry: 1:10-1:50,Western blot: 1:1000
Restrictions:	For Research Use only

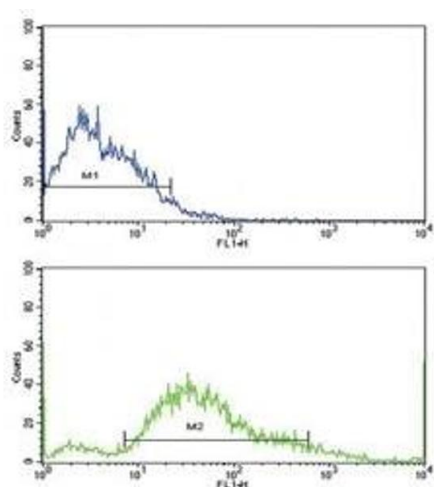
## Handling

Format:	Liquid
Buffer:	In 1X PBS, pH 7.4, with 0.09 % sodium azide
Preservative:	Sodium azide
Precaution of Use:	This product contains Sodium azide: a POISONOUS AND HAZARDOUS SUBSTANCE which should be handled by trained staff only.
Storage:	-20 °C
Storage Comment:	Store at 4°C for up to one month. For long term, aliquot the PDGFR beta antibody and store frozen at -20°C or colder. Avoid repeated freeze-thaw cycles.



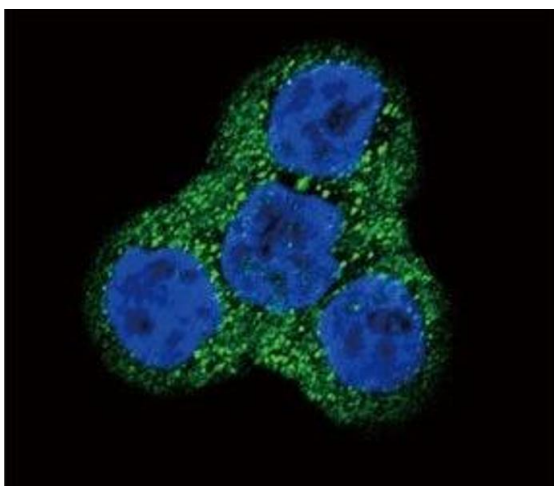
#### Immunohistochemistry

**Image 1.** IHC analysis of FFPE human breast carcinoma stained with PDGFR beta antibody



#### Flow Cytometry

**Image 2.** Flow cytometric analysis of SK-Br-3 cells using PDGFR beta antibody (bottom histogram) compared to a negative control (top histogram). FITC-conjugated goat anti-rabbit secondary Ab was used for the analysis



#### Immunofluorescence

**Image 3.** Confocal immunofluorescent analysis of PDGFR beta antibody with WiDr cells followed by Alexa Fluor 488-conjugated goat anti-rabbit IgG (green). DAPI was used as a nuclear counterstain (blue).

Please check the [product details page](#) for more images. Overall 6 images are available for ABIN3029811.