



[Go to Product page](#)

Datasheet for ABIN3029813

anti-Retinoblastoma Protein (Rb) antibody (AA 858-886)

5 Images

Overview

Quantity:	0.4 mL
Target:	Retinoblastoma Protein (Rb) (Rb Protein)
Binding Specificity:	AA 858-886
Reactivity:	Human
Host:	Rabbit
Clonality:	Polyclonal
Conjugate:	This Retinoblastoma Protein (Rb) antibody is un-conjugated
Application:	Western Blotting (WB), ELISA, Immunohistochemistry (IHC), Flow Cytometry (FACS)

Product Details

Immunogen:	A portion of amino acids 858-886 from the human protein was used as the immunogen for this Retinoblastoma antibody.
Isotype:	Ig Fraction
Cross-Reactivity (Details):	Expected species reactivity: Rat
Purification:	Purified

Target Details

Target:	Retinoblastoma Protein (Rb) (Rb Protein)
Alternative Name:	Retinoblastoma (Rb Protein Products)
Background:	RB1/Retinoblastoma is a negative regulator of the cell cycle and was the first tumor suppressor

Target Details

gene found. This protein also stabilizes constitutive heterochromatin to maintain the overall chromatin structure. The active, hypophosphorylated form of the protein binds transcription factor E2F1.

UniProt: [P06400](#)

Pathways: [Mitotic G1-G1/S Phases](#)

Application Details

Application Notes: Titration of the Retinoblastoma antibody may be required due to differences in protocols and secondary/substrate sensitivity.\. Western blot: 1:1000,IHC (Paraffin): 1:50-1:100,Flow Cytometry: 1:10-1:50

Restrictions: For Research Use only

Handling

Format: Liquid

Buffer: In 1X PBS, pH 7.4, with 0.09 % sodium azide

Preservative: Sodium azide

Precaution of Use: This product contains Sodium azide: a POISONOUS AND HAZARDOUS SUBSTANCE which should be handled by trained staff only.

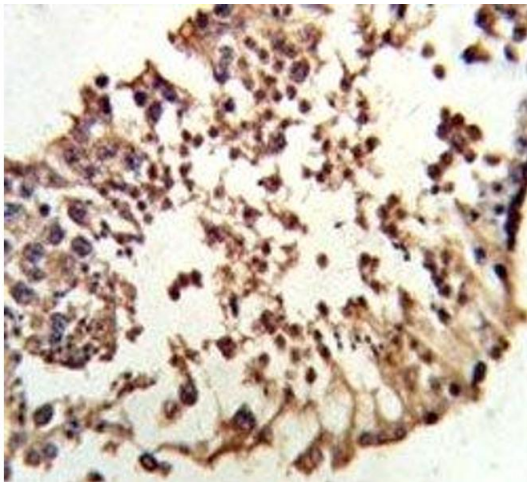
Storage: -20 °C

Storage Comment: Aliquot the Retinoblastoma antibody and store frozen at -20°C or colder. Avoid repeated freeze-thaw cycles.



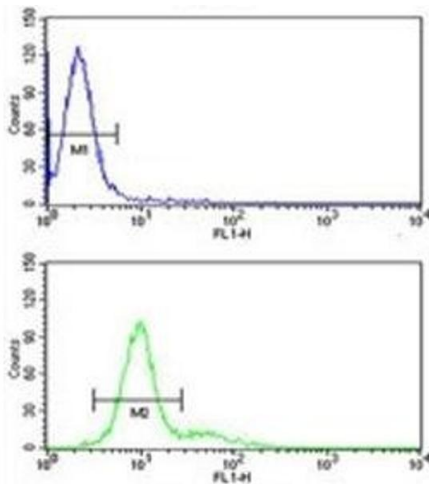
Western Blotting

Image 1. Western blot analysis of Retinoblastoma antibody and 293 lysate



Immunohistochemistry

Image 2. IHC analysis of FFPE human testis tissue stained with Retinoblastoma antibody



Flow Cytometry

Image 3. Retinoblastoma antibody flow cytometric analysis of 293 cells (green) compared to a negative control (blue). FITC-conjugated goat-anti-rabbit secondary Ab was used for the analysis.

Please check the [product details page](#) for more images. Overall 5 images are available for ABIN3029813.