

Datasheet for ABIN3029824  
**anti-ABI1 antibody (C-Term)**

## 3 Images

[Go to Product page](#)

## Overview

Quantity:	100 µg
Target:	ABI1
Binding Specificity:	C-Term
Reactivity:	Human, Rat, Mouse
Host:	Rabbit
Clonality:	Polyclonal
Conjugate:	This ABI1 antibody is un-conjugated
Application:	Western Blotting (WB), Immunohistochemistry (Paraffin-embedded Sections) (IHC (p)), Immunocytochemistry (ICC)

## Product Details

Immunogen:	An amino acid sequence from the C-terminus of human SSH3BP1 (WYEGVCNRVTGL) was used as the immunogen for this SSH3BP1 antibody.
Isotype:	IgG
Purification:	Antigen affinity

## Target Details

Target:	ABI1
Alternative Name:	SSH3BP1 ( <a href="#">ABI1 Products</a> )
Background:	ABI1 is a human homolog of mouse Abl-interactor-1(Abi1), mapped on 10p11.2. ABI1 participates in the transduction of signals from Ras to Rac by regulating Rac-specific guanine

## Target Details

nucleotide exchange factor(GEF) activities. ABI1 dramatically promoted ABL1-mediated tyrosine phosphorylation of MENA, but not of other substrates. Abi-1 regulates c-Abl-mediated phosphorylation of Mena by interacting with both proteins. ABI1 plays a role in the leukemogenesis by translocating to MLL.

UniProt: [Q8IZP0](#)

Pathways: [RTK Signaling](#), [Response to Water Deprivation](#), [ER-Nucleus Signaling](#)

## Application Details

Application Notes: The stated application concentrations are suggested starting amounts. Titration of the SSH3BP1 antibody may be required due to differences in protocols and secondary/substrate sensitivity.\. Western blot: 0.5-1 µg/mL,IHC (Paraffin): 0.5-1 µg/mL,Immunocytochemistry: 0.5-1 µg/mL

Restrictions: For Research Use only

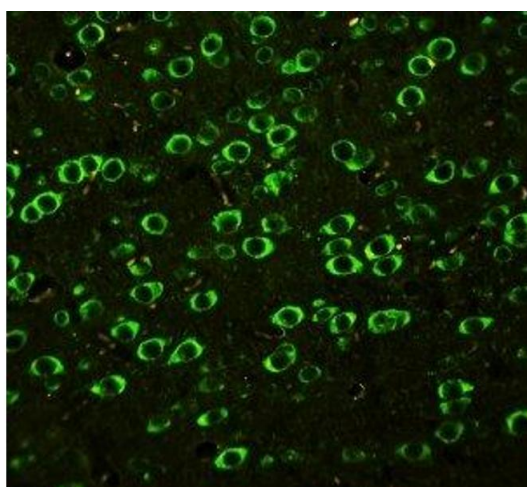
## Handling

Buffer: 0.5 mg/mL if reconstituted with 0.2 mL sterile DI water

Storage: -20 °C

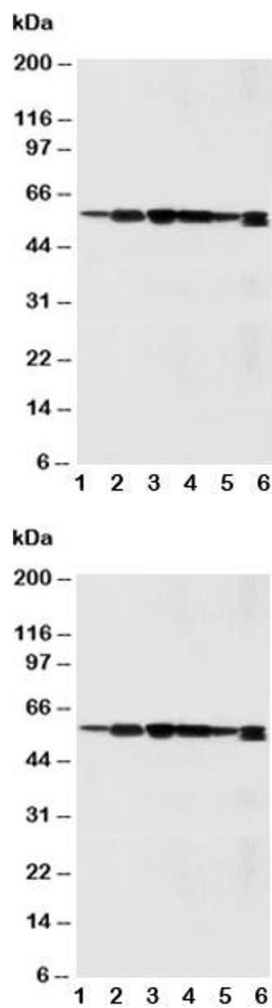
Storage Comment: After reconstitution, the SSH3BP1 antibody can be stored for up to one month at 4°C. For long-term, aliquot and store at -20°C. Avoid repeated freezing and thawing.

## Images



### Immunofluorescence

**Image 1.** IF: SSH3BP1 antibody testing of rat brain tissue



Western Blotting

**Image 2.** Western blot testing of SSH3BP1 antibody and  
Lane 1: rat liver; 2: rat brain; 3: MM231; 4: HeLa; 5: SMMC-  
7721; 6: Jurkat cell lysate

Western Blotting

**Image 3.** Western blot testing of SSH3BP1 antibody and  
Lane 1: rat liver