

Datasheet for ABIN3029825
anti-ABI2 antibody (N-Term)[Go to Product page](#)

2 Images

Overview

Quantity:	100 µg
Target:	ABI2
Binding Specificity:	N-Term
Reactivity:	Human, Mouse, Rat
Host:	Rabbit
Clonality:	Polyclonal
Conjugate:	This ABI2 antibody is un-conjugated
Application:	Western Blotting (WB)

Product Details

Immunogen:	An amino acid sequence from the N-terminus of human ABL Interactor 2 (RFKVSTQNMKMGGLPR) was used as the immunogen for this ABI2 antibody (100% homologous in human, mouse and rat).
Isotype:	IgG
Purification:	Antigen affinity

Target Details

Target:	ABI2
Alternative Name:	ABI2 (ABI2 Products)
Background:	ABL Interactor 2 is a protein that in humans is encoded by the ABI2 gene. By analysis of a YAC and a BAC, Machado et al.(2000) mapped the gene to 2q31-q33. ABI2 possesses a basic N

Target Details

terminus with homology to a homeodomain protein, a central serine-rich region, three PEST sequences, which are implicated in susceptibility to protein degradation, several proline-rich stretches, and an acidic C terminus with multiple phosphorylation sites and an SH3 domain. Dai and Pendergast(1995) suggested that the ABL proteins may function to coordinate the cytoplasmic and nuclear functions of the ABL1 tyrosine kinase.

UniProt: [Q9NYB9](#)

Application Details

Application Notes: The stated application concentrations are suggested starting amounts. Titration of the ABI2 antibody may be required due to differences in protocols and secondary/substrate sensitivity.\. Western blot: 0.5-1 µg/mL

Restrictions: For Research Use only

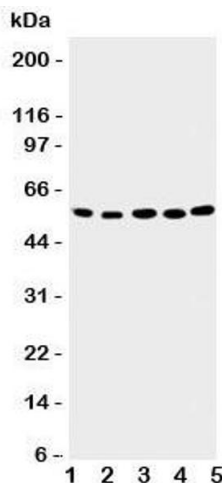
Handling

Buffer: 0.5 mg/mL if reconstituted with 0.2 mL sterile DI water

Storage: -20 °C

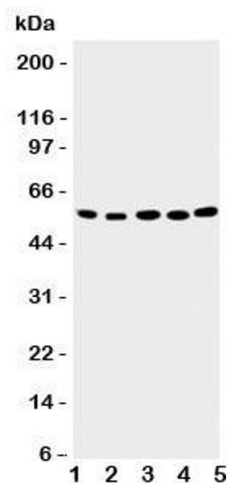
Storage Comment: After reconstitution, the ABI2 antibody can be stored for up to one month at 4°C. For long-term, aliquot and store at -20°C. Avoid repeated freezing and thawing.

Images



Western Blotting

Image 1. Western blot testing of ABI2 antibody; Lane 1: rat brain; 2: human placenta; 3: MCF-7; 4: HeLa; 5: Jurkat cell lysate



Western Blotting

Image 2. Western blot testing of ABI2 antibody