

Datasheet for ABIN3029828
anti-AIM2 antibody (AA 1-50)

5 Images

[Go to Product page](#)

Overview

Quantity:	0.4 mL
Target:	AIM2
Binding Specificity:	AA 1-50
Reactivity:	Human
Host:	Rabbit
Clonality:	Polyclonal
Conjugate:	This AIM2 antibody is un-conjugated
Application:	Western Blotting (WB), ELISA, Immunofluorescence (IF), Flow Cytometry (FACS)

Product Details

Immunogen:	A portion of amino acids 1-50 from the human protein was used as the immunogen for this AIM2 antibody.
Isotype:	Ig Fraction
Purification:	Antigen affinity purified

Target Details

Target:	AIM2
Alternative Name:	AIM2 (AIM2 Products)
Background:	Involved in innate immune response by recognizing cytosolic double-stranded DNA and inducing caspase-1-activating inflammasome formation in macrophages. Upon binding to DNA is thought to undergo oligomerization and to associate with PYCARD initiating the recruitment

Target Details

of caspase-1 precursor and processing of interleukin-1 beta and interleukin-18. Detects cytosolic dsDNA of viral and bacterial origin in a non-sequence-specific manner. Can also trigger PYCARD-dependent, caspase-1-independent cell death that involves caspase-8 (By similarity). Tumor suppressor which may act by repressing NF-kappa-B transcriptional activity. [UniProt]

UniProt: [O14862](#)

Pathways: [Activation of Innate immune Response](#), [Positive Regulation of Endopeptidase Activity](#), [Inflammasome](#)

Application Details

Application Notes: Titration of the AIM2 antibody may be required due to differences in protocols and secondary/substrate sensitivity.\. Western blot: 1:1000,Flow Cytometry: 1:10-1:50,Immunofluorescence: 1:10-1:50

Restrictions: For Research Use only

Handling

Format: Liquid

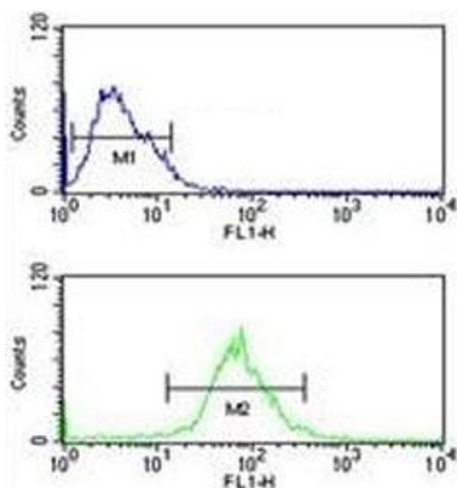
Buffer: In 1X PBS, pH 7.4, with 0.09 % sodium azide

Preservative: Sodium azide

Precaution of Use: This product contains Sodium azide: a POISONOUS AND HAZARDOUS SUBSTANCE which should be handled by trained staff only.

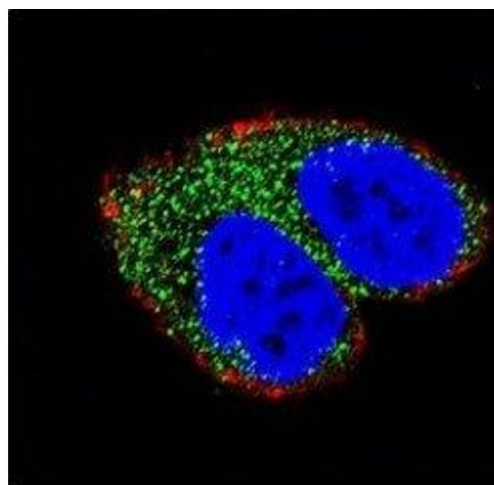
Storage: -20 °C

Storage Comment: Aliquot the AIM2 antibody and store frozen at -20°C or colder. Avoid repeated freeze-thaw cycles.



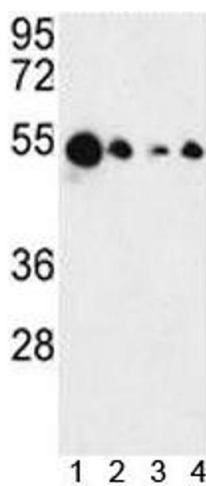
Flow Cytometry

Image 1. AIM2 antibody flow cytometric analysis of MCF-7 cells (green) compared to a negative control (blue). FITC-conjugated goat-anti-rabbit secondary Ab was used for the analysis.



Immunofluorescence

Image 2. Confocal immunofluorescent analysis of AIM2 antibody with MCF-7 cells followed by Alexa Fluor 488-conjugated goat anti-rabbit IgG (green). Actin filaments have been labeled with Alexa Fluor 555 Phalloidin (red). DAPI was used as a nuclear counterstain (bl



Western Blotting

Image 3. Western blot analysis of AIM2 antibody and 1) MCF-7, 2) HL-60, 3) K562 and 4) HeLa lysate. Predicted molecular weight 40-45 kDa.

Please check the [product details page](#) for more images. Overall 5 images are available for ABIN3029828.