

Datasheet for ABIN3029829
anti-ASCL1 antibody (AA 63-90)



[Go to Product page](#)

2 Images

Overview

Quantity:	0.4 mL
Target:	ASCL1
Binding Specificity:	AA 63-90
Reactivity:	Human
Host:	Rabbit
Clonality:	Polyclonal
Conjugate:	This ASCL1 antibody is un-conjugated
Application:	ELISA, Western Blotting (WB)

Product Details

Immunogen:	A portion of amino acids 63-90 from the human protein was used as the immunogen for this MASH1 / ASCL1 antibody.
Isotype:	Ig Fraction
Purification:	Antigen affinity purified

Target Details

Target:	ASCL1
Alternative Name:	ASCL1 (MASH1) (ASCL1 Products)
Background:	This gene encodes 'Achaete scute complex homolog like 1' (ASCL1) or 'Mammalian achaete scute complex homolog 1' (MASH1), a member of the basic helix-loop-helix (BHLH) family of transcription factors. The protein activates transcription by binding to the E box (5'-CANNTG-3').

Target Details

Dimerization with other BHLH proteins is required for efficient DNA binding. This protein plays a role in the neuronal commitment and differentiation and in the generation of olfactory and autonomic neurons. Mutations in this gene may contribute to the congenital central hypoventilation syndrome (CCHS) phenotype in rare cases.

UniProt: [P50553](#)

Pathways: [Dopaminergic Neurogenesis](#)

Application Details

Application Notes: Titration of the ASCL1 antibody may be required due to differences in protocols and secondary/substrate sensitivity.\. Western blot: 1:1000

Restrictions: For Research Use only

Handling

Format: Liquid

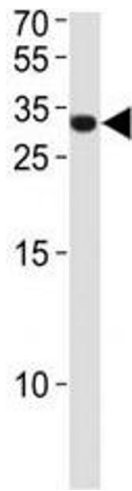
Buffer: In 1X PBS, pH 7.4, with 0.09 % sodium azide

Preservative: Sodium azide

Precaution of Use: This product contains Sodium azide: a POISONOUS AND HAZARDOUS SUBSTANCE which should be handled by trained staff only.

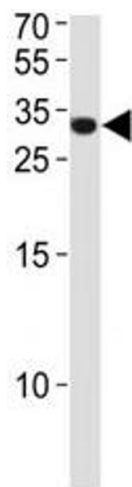
Storage: -20 °C

Storage Comment: Aliquot the ASCL1 antibody and store frozen at -20°C or colder. Avoid repeated freeze-thaw cycles.



Western Blotting

Image 1. ASCL1 antibody western blot analysis in NCI-H460 lysate. Observed molecular weight ~34 kDa.



Western Blotting

Image 2. ASCL1 antibody western blot analysis in NCI-H460 lysate. Observed molecular weight ~34 kDa.