

Datasheet for ABIN3029839  
**anti-ACTG2 antibody (AA 343-371)**[Go to Product page](#)

## 3 Images

## Overview

Quantity:	0.4 mL
Target:	ACTG2
Binding Specificity:	AA 343-371
Reactivity:	Human
Host:	Rabbit
Clonality:	Polyclonal
Conjugate:	This ACTG2 antibody is un-conjugated
Application:	Western Blotting (WB), Immunohistochemistry (IHC), ELISA

## Product Details

Immunogen:	A portion of amino acids 343-371 from the human protein was used as the immunogen for this ACTG2 antibody.
Isotype:	Ig Fraction
Cross-Reactivity (Details):	Expected species reactivity: Bovine, Chicken, Mouse, Rat
Purification:	Antigen affinity purified

## Target Details

Target:	ACTG2
Alternative Name:	ACTG2 ( <a href="#">ACTG2 Products</a> )
Background:	Actins are highly conserved proteins that are involved in various types of cell motility, and

## Target Details

maintenance of the cytoskeleton. In vertebrates, three main groups of actin isoforms, alpha, beta and gamma have been identified. The alpha actins are found in muscle tissues and are a major constituent of the contractile apparatus. The beta and gamma actins co-exist in most cell types as components of the cytoskeleton, and as mediators of internal cell motility. Actin, gamma 2, encoded by this gene, is a smooth muscle actin found in enteric tissues.

UniProt: [P63267](#)

## Application Details

Application Notes: Titration of the ACTG2 antibody may be required due to differences in protocols and secondary/substrate sensitivity.\. Western blot: 1:1000,IHC (Paraffin): 1:10-1:50

Restrictions: For Research Use only

## Handling

Format: Liquid

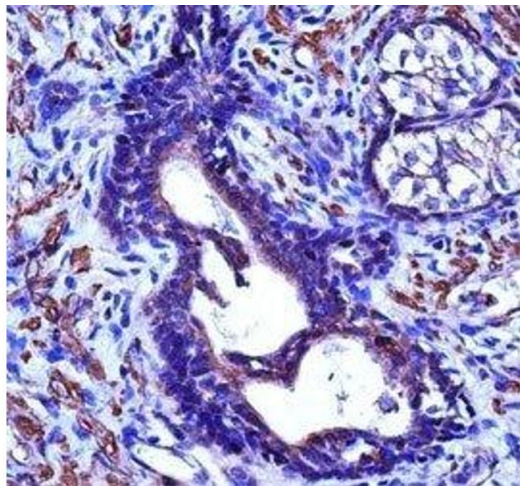
Buffer: In 1X PBS, pH 7.4, with 0.09 % sodium azide

Preservative: Sodium azide

Precaution of Use: This product contains Sodium azide: a POISONOUS AND HAZARDOUS SUBSTANCE which should be handled by trained staff only.

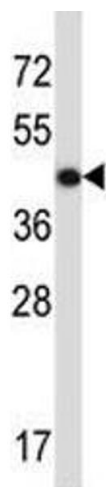
Storage: -20 °C

Storage Comment: Aliquot the ACTG2 antibody and store frozen at -20°C or colder. Avoid repeated freeze-thaw cycles.



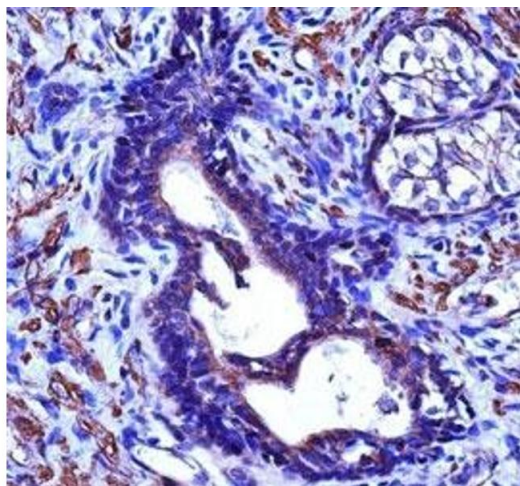
#### Immunohistochemistry

**Image 1.** ACTG2 antibody immunohistochemistry analysis in formalin fixed and paraffin embedded human prostate carcinoma.



#### Western Blotting

**Image 2.** ACTG2 antibody western blot analysis in CEM lysate



#### Immunohistochemistry

**Image 3.** ACTG2 antibody immunohistochemistry analysis in formalin fixed and paraffin embedded human prostate carcinoma.