

Datasheet for ABIN3029841
anti-CD166 antibody (AA 58-87)

5 Images

[Go to Product page](#)

Overview

Quantity:	0.4 mL
Target:	CD166 (ALCAM)
Binding Specificity:	AA 58-87
Reactivity:	Human
Host:	Rabbit
Clonality:	Polyclonal
Application:	Western Blotting (WB), Immunohistochemistry (IHC), ELISA, Flow Cytometry (FACS)

Product Details

Immunogen:	A portion of amino acids 58-87 from the human protein was used as the immunogen for this CD166 antibody.
Isotype:	Ig Fraction
Cross-Reactivity (Details):	Expected species reactivity: Mouse, Rat, Bovine, Rabbit
Purification:	Purified

Target Details

Target:	CD166 (ALCAM)
Alternative Name:	CD166 (ALCAM Products)
Background:	CD166 is cell adhesion molecule that binds to CD6. The protein is involved in neurite extension by neurons via heterophilic and homophilic interactions. It may play a role in the binding of T- and B-cells to activated leukocytes, as well as in interactions between cells of the nervous

Target Details

system.

UniProt: [Q13740](#)

Application Details

Application Notes: Titration of the CD166 antibody may be required due to differences in protocols and secondary/substrate sensitivity.\. Western blot: 1:1000,IHC (Paraffin): 1:50-1:100,Flow Cytometry: 1:10-1:50

Restrictions: For Research Use only

Handling

Format: Liquid

Buffer: In 1X PBS, pH 7.4, with 0.09 % sodium azide

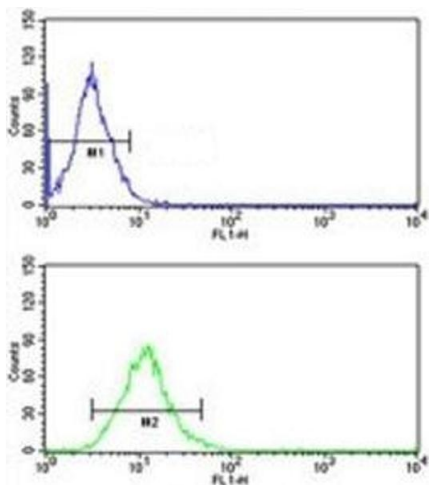
Preservative: Sodium azide

Precaution of Use: This product contains Sodium azide: a POISONOUS AND HAZARDOUS SUBSTANCE which should be handled by trained staff only.

Storage: -20 °C

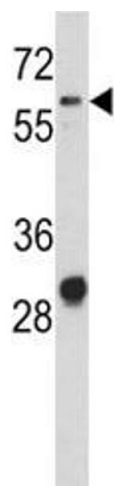
Storage Comment: Aliquot the CD166 antibody and store frozen at -20°C or colder. Avoid repeated freeze-thaw cycles.

Images



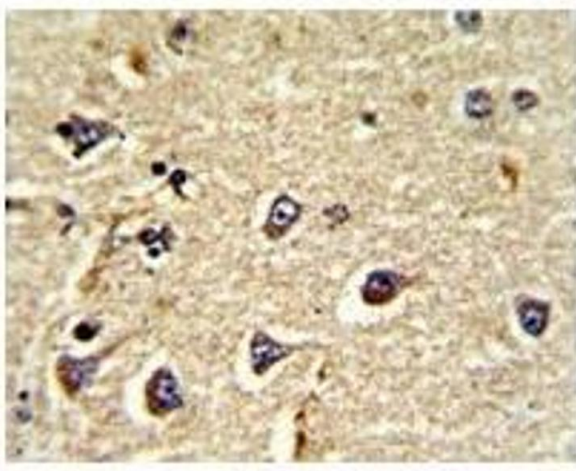
Flow Cytometry

Image 1. CD166 antibody flow cytometric analysis of NCI-H292 cells (green) compared to a negative control (blue). FITC-conjugated goat-anti-rabbit secondary Ab was used for the analysis.



Western Blotting

Image 2. Western blot analysis of CD166 antibody and NCI-H460 lysate.



Immunohistochemistry

Image 3. IHC analysis of FFPE human brain tissue stained with CD166 antibody

Please check the [product details page](#) for more images. Overall 5 images are available for ABIN3029841.