

Datasheet for ABIN3029842  
**anti-AFT1 antibody (AA 193-219)**



[Go to Product page](#)

3 Images

## Overview

Quantity:	0.4 mL
Target:	AFT1
Binding Specificity:	AA 193-219
Reactivity:	Human
Host:	Rabbit
Clonality:	Polyclonal
Conjugate:	This AFT1 antibody is un-conjugated
Application:	Western Blotting (WB), ELISA, Flow Cytometry (FACS)

## Product Details

Immunogen:	A portion of amino acids 193-219 from the human protein was used as the immunogen for this ATF1 antibody.
Isotype:	Ig Fraction
Cross-Reactivity (Details):	Expected species reactivity: Bovine
Purification:	Antigen affinity purified

## Target Details

Target:	AFT1
Alternative Name:	ATF1 ( <a href="#">AFT1 Products</a> )
Background:	ATF1 binds the cAMP response element (CRE) (consensus: 5'-GTGACGT[AC][AG]-3'), a

Target Details

	sequence present in many viral and cellular promoters. ATF1 binds to the Tax-responsive element (TRE) of HTLV-I. ATF1 mediates PKA-induced stimulation of CRE-reporter genes.
UniProt:	<a href="#">P18846</a>
Pathways:	<a href="#">Neurotrophin Signaling Pathway</a> , <a href="#">Activation of Innate immune Response</a> , <a href="#">Myometrial Relaxation and Contraction</a> , <a href="#">Toll-Like Receptors Cascades</a>

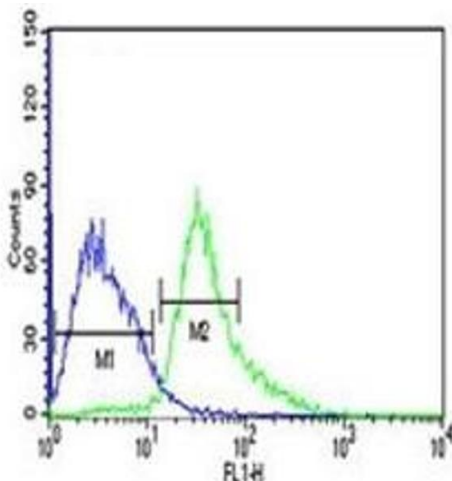
Application Details

Application Notes:	Titration of the ATF1 antibody may be required due to differences in protocols and secondary/substrate sensitivity.\. Western blot: 1:1000,Flow Cytometry: 1:10-1:50
Restrictions:	For Research Use only

Handling

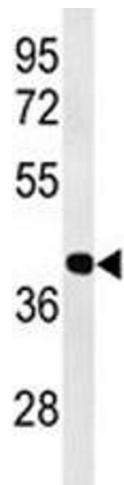
Format:	Liquid
Buffer:	In 1X PBS pH 7.4 with 0.09 % sodium azide
Preservative:	Sodium azide
Precaution of Use:	This product contains Sodium azide: a POISONOUS AND HAZARDOUS SUBSTANCE which should be handled by trained staff only.
Storage:	-20 °C
Storage Comment:	Aliquot the ATF1 antibody and store frozen at -20°C or colder. Avoid repeated freeze-thaw cycles.

Images



Flow Cytometry

**Image 1.** ATF1 antibody flow cytometric analysis of Jurkat cells (right histogram) compared to a negative control (left histogram). FITC-conjugated goat-anti-rabbit secondary Ab was used for the analysis.



Western Blotting

**Image 2.** Western blot analysis of ATF1 antibody and Jurkat lysate



Western Blotting

**Image 3.** Western blot analysis of ATF1 antibody and Jurkat lysate