

Datasheet for ABIN3029847
anti-ATF3 antibody (AA 140-168)

5 Images

[Go to Product page](#)

Overview

Quantity:	0.4 mL
Target:	ATF3
Binding Specificity:	AA 140-168
Reactivity:	Human
Host:	Rabbit
Clonality:	Polyclonal
Conjugate:	This ATF3 antibody is un-conjugated
Application:	Western Blotting (WB), ELISA, Flow Cytometry (FACS)

Product Details

Immunogen:	A portion of amino acids 140-168 from the human protein was used as the immunogen for this ATF3 antibody.
Isotype:	Ig Fraction
Cross-Reactivity (Details):	Expected species reactivity: Mouse, Rat, Bovine
Purification:	Antigen affinity purified

Target Details

Target:	ATF3
Alternative Name:	ATF3 (ATF3 Products)
Background:	Activating transcription factor 3 is a member of the mammalian activation transcription

Target Details

factor/cAMP responsive element-binding (CREB) protein family of transcription factors. Multiple transcript variants encoding two different isoforms have been found for this gene. The longer isoform represses rather than activates transcription from promoters with ATF binding elements. The shorter isoform (deltaZip2) lacks the leucine zipper protein-dimerization motif and does not bind to DNA, and it stimulates transcription presumably by sequestering inhibitory co-factors away from the promoter. It is possible that alternative splicing of the ATF3 gene may be physiologically important in the regulation of target genes.

UniProt: [P18847](#)

Pathways: [Myometrial Relaxation and Contraction](#), [ER-Nucleus Signaling](#), [Unfolded Protein Response](#)

Application Details

Application Notes: Titration of the ATF3 antibody may be required due to differences in protocols and secondary/substrate sensitivity.\. Western blot: 1:1000,Flow Cytometry: 1:10-1:50

Restrictions: For Research Use only

Handling

Format: Liquid

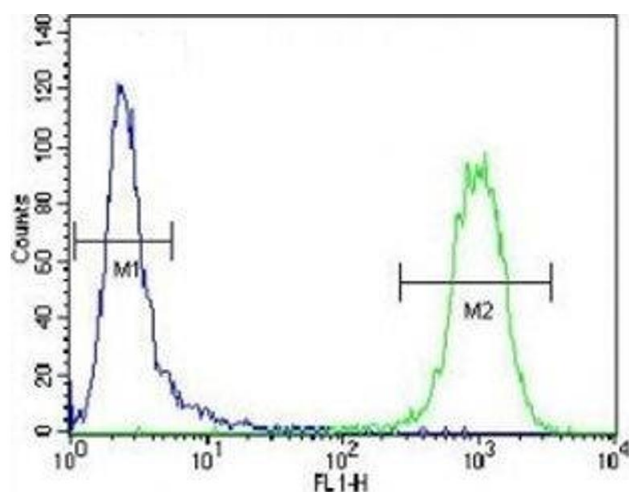
Buffer: In 1X PBS pH 7.4 with 0.09 % sodium azide

Preservative: Sodium azide

Precaution of Use: This product contains Sodium azide: a POISONOUS AND HAZARDOUS SUBSTANCE which should be handled by trained staff only.

Storage: -20 °C

Storage Comment: Aliquot the ATF3 antibody and store frozen at -20°C or colder. Avoid repeated freeze-thaw cycles.



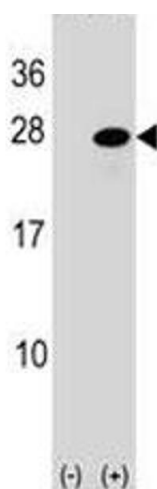
Flow Cytometry

Image 1. ATF3 antibody flow cytometric analysis of CEM cells (right histogram) compared to a negative control (left histogram). FITC-conjugated goat-anti-rabbit secondary Ab was used for the analysis.



Western Blotting

Image 2. ATF3 antibody western blot analysis in CEM lysate. Predicted size: 21-28 kDa



Western Blotting

Image 3. Western blot analysis of ATF3 antibody and 293 cell lysate (2 ug/lane) either nontransfected (Lane 1) or transiently transfected (2) with the ATF3 gene.

Please check the [product details page](#) for more images. Overall 5 images are available for ABIN3029847.