

Datasheet for ABIN3029852  
**anti-ATF6B antibody (AA 560-589)**

## 6 Images

[Go to Product page](#)

## Overview

Quantity:	0.4 mL
Target:	ATF6B
Binding Specificity:	AA 560-589
Reactivity:	Human, Mouse, Hamster
Host:	Rabbit
Clonality:	Polyclonal
Conjugate:	This ATF6B antibody is un-conjugated
Application:	Western Blotting (WB), ELISA, Immunohistochemistry (IHC)

## Product Details

Immunogen:	A portion of amino acids 560-589 from the human protein was used as the immunogen for this ATF6 beta antibody.
Isotype:	Ig Fraction
Purification:	Antigen affinity purified

## Target Details

Target:	ATF6B
Alternative Name:	ATF6 beta ( <a href="#">ATF6B Products</a> )
Background:	ATF6 beta is a transcription factor in the unfolded protein response (UPR) pathway during ER stress. Either as a homodimer or as a heterodimer with ATF6-alpha, the encoded protein binds to the ER stress response element, interacting with nuclear transcription factor Y to activate

## Target Details

UPR target genes. The protein is normally found in the membrane of the endoplasmic reticulum, however, under ER stress, the N-terminal cytoplasmic domain is cleaved from the rest of the protein and translocates to the nucleus.

UniProt: [Q99941](#)

Pathways: [Thyroid Hormone Synthesis](#), [Myometrial Relaxation and Contraction](#)

## Application Details

Application Notes: Titration of the ATF6 beta antibody may be required due to differences in protocols and secondary/substrate sensitivity.\. IHC (Paraffin): 1:25,Western blot: 1:1000

Restrictions: For Research Use only

## Handling

Format: Liquid

Buffer: In 1X PBS pH 7.4 with 0.09 % sodium azide

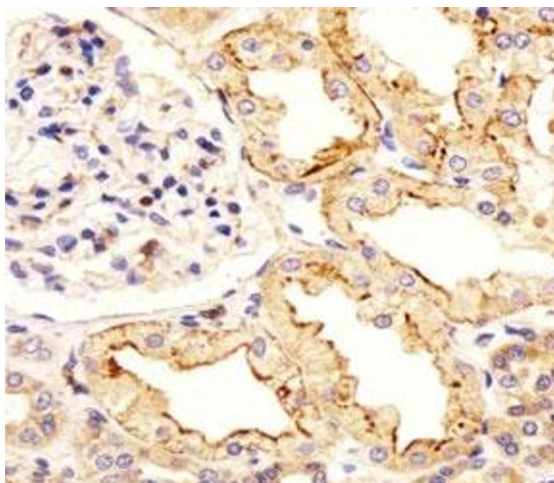
Preservative: Sodium azide

Precaution of Use: This product contains Sodium azide: a POISONOUS AND HAZARDOUS SUBSTANCE which should be handled by trained staff only.

Storage: -20 °C

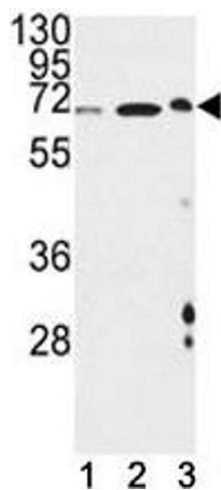
Storage Comment: Aliquot the ATF6 beta antibody and store frozen at -20°C or colder. Avoid repeated freeze-thaw cycles.

## Images



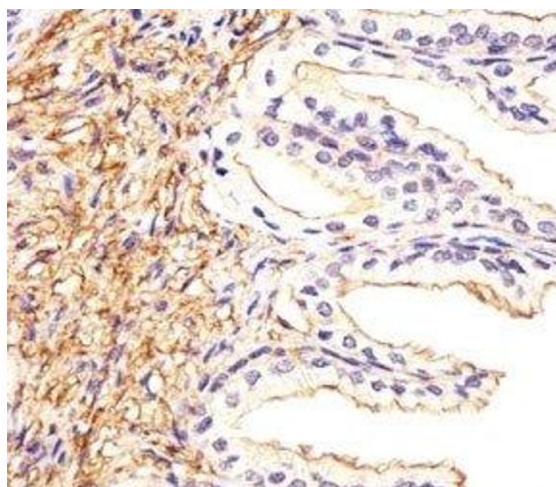
### Immunohistochemistry

**Image 1.** Immunohistochemical analysis of paraffin-embedded human kidney section using ATF6 beta antibody at 1:25.



#### Western Blotting

**Image 2.** ATF6 beta antibody western blot analysis in (1) mouse NIH3T3, (2) hamster CHO and (3) mouse cerebellum lysate



#### Immunohistochemistry

**Image 3.** Immunohistochemical analysis of paraffin-embedded human prostate section using ATF6 beta antibody at 1:25.

Please check the [product details page](#) for more images. Overall 6 images are available for ABIN3029852.