



[Go to Product page](#)

Datasheet for ABIN3029853
anti-ACVRL1 antibody (AA 38-68)

7 Images

Overview

Quantity:	0.4 mL
Target:	ACVRL1
Binding Specificity:	AA 38-68
Reactivity:	Human, Mouse
Host:	Rabbit
Clonality:	Polyclonal
Conjugate:	This ACVRL1 antibody is un-conjugated
Application:	Western Blotting (WB), ELISA, Immunohistochemistry (IHC), Flow Cytometry (FACS)

Product Details

Immunogen:	A portion of amino acids 38-68 from the human protein was used as the immunogen for this ALK1 antibody.
Isotype:	Ig Fraction
Purification:	Purified

Target Details

Target:	ACVRL1
Alternative Name:	ALK1 (ACVRL1 Products)
Background:	ACVRL1 is a type I cell-surface receptor for the TGF-beta superfamily of ligands. It shares with other type I receptors a high degree of similarity in serine-threonine kinase subdomains, a glycine- and serine-rich region (called the GS domain) preceding the kinase domain, and a short

Target Details

C-terminal tail. This protein, sometimes termed ALK1, shares similar domain structures with other closely related ALK or activin receptor-like kinase proteins that form a subfamily of receptor serine/threonine kinases. Mutations in this gene are associated with hemorrhagic telangiectasia type 2, also known as Rendu-Osler-Weber syndrome 2.

UniProt: [P37023](#)

Application Details

Application Notes: Titration of the ALK1 antibody may be required due to differences in protocols and secondary/substrate sensitivity. \. Flow Cytometry: 1:10-1:50,IHC (Paraffin): 1:50-1:100,Western blot: 1:1000

Restrictions: For Research Use only

Handling

Format: Liquid

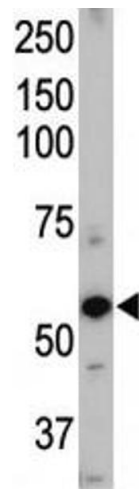
Buffer: In 1X PBS, pH 7.4, with 0.09 % sodium azide

Preservative: Sodium azide

Precaution of Use: This product contains Sodium azide: a POISONOUS AND HAZARDOUS SUBSTANCE which should be handled by trained staff only.

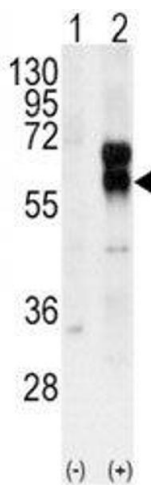
Storage: -20 °C

Storage Comment: Aliquot the ALK1 antibody and store frozen at -20°C or colder. Avoid repeated freeze-thaw cycles.



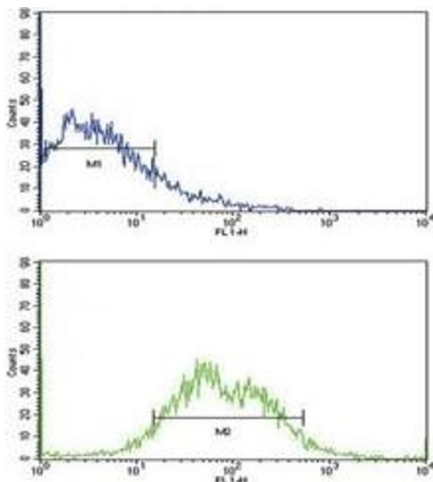
Western Blotting

Image 1. Western blot of ALK1 antibody and mouse heart tissue lysate. Predicted molecular weight ~60 kDa.



Western Blotting

Image 2. Western blot analysis of ALK1 antibody and 293 cell lysate (2 ug/lane) either nontransfected (Lane 1) or transiently transfected with the ACVRL1 gene (2).



Flow Cytometry

Image 3. Flow cytometric analysis of HepG2 cells using ALK1 antibody (bottom histogram) compared to a negative control (top histogram). FITC-conjugated goat-anti-rabbit secondary Ab was used for the analysis.

Please check the [product details page](#) for more images. Overall 7 images are available for ABIN3029853.