

Datasheet for ABIN3029858
anti-ADAM17 antibody (AA 195-224)



[Go to Product page](#)

3 Images

Overview

Quantity:	0.4 mL
Target:	ADAM17
Binding Specificity:	AA 195-224
Reactivity:	Human
Host:	Rabbit
Clonality:	Polyclonal
Conjugate:	This ADAM17 antibody is un-conjugated
Application:	Western Blotting (WB), ELISA, Flow Cytometry (FACS)

Product Details

Immunogen:	A portion of amino acids 195-224 from the human protein was used as the immunogen for this ADAM17 antibody.
Isotype:	Ig Fraction
Purification:	Antigen affinity purified

Target Details

Target:	ADAM17
Alternative Name:	ADAM17 (ADAM17 Products)
Background:	ADAM17 is a member of the ADAM (a disintegrin and metalloprotease domain) family. Members of this family are membrane-anchored proteins structurally related to snake venom disintegrins, and have been implicated in a variety of biologic processes involving cell-cell and

Target Details

cell-matrix interactions, including fertilization, muscle development, and neurogenesis. ADAM17 functions as a tumor necrosis factor-alpha converting enzyme, binds mitotic arrest deficient 2 protein, and also plays a prominent role in the activation of the Notch signaling pathway.

UniProt: [P78536](#)

Pathways: [Notch Signaling](#), [EGFR Signaling Pathway](#), [Neurotrophin Signaling Pathway](#), [Response to Growth Hormone Stimulus](#)

Application Details

Application Notes: Titration of the ADAM17 antibody may be required due to differences in protocols and secondary/substrate sensitivity.\. Western blot: 1:1000,Flow Cytometry: 1:10-1:50

Restrictions: For Research Use only

Handling

Format: Liquid

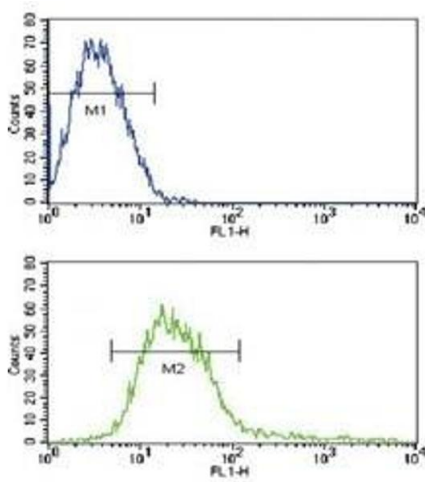
Buffer: In 1X PBS, pH 7.4, with 0.09 % sodium azide

Preservative: Sodium azide

Precaution of Use: This product contains Sodium azide: a POISONOUS AND HAZARDOUS SUBSTANCE which should be handled by trained staff only.

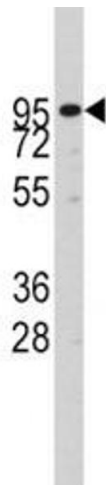
Storage: -20 °C

Storage Comment: Aliquot the ADAM17 antibody and store frozen at -20°C or colder. Avoid repeated freeze-thaw cycles.



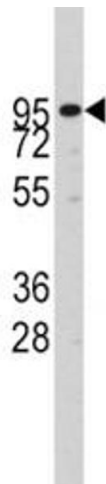
Flow Cytometry

Image 1. Flow cytometric analysis of CEM cells using ADAM17 antibody (green) compared to a negative control (blue). FITC-conjugated goat-anti-rabbit secondary Ab was used for the analysis.



Western Blotting

Image 2. Western blot analysis of ADAM17 antibody and CEM lysate



Western Blotting

Image 3. Western blot analysis of ADAM17 antibody and CEM lysate